

Electron Microscopy 1974

Abstracts of papers presented to the
EIGHTH INTERNATIONAL CONGRESS

on

ELECTRON MICROSCOPY

held in Canberra, Australia

August 25-31 1974

Edited by: J. V. SANDERS and D. J. GOODCHILD

VOLUME II BIOLOGICAL

Published by: THE AUSTRALIAN ACADEMY OF SCIENCE
CANBERRA, A.C.T. AUSTRALIA.

volume II

contents

QUANTITATIVE MICROSCOPY, STEREOLOGY

SYMPOSIUM

SYMPOSIUM LECTURES	PAGE
The fundamentals of quantitative stereology E. E. UNDERWOOD	2
A note on numerical methods for the thin section model A. J. JAKEMAN and R. S. ANDERSSON	4
The estimation of aggregate and overall characteristics from thick sections by transmission microscopy R. E. MILES	6
Analysis of evolving particle size distributions R. T. DEHOFF	8
Analysis of lamellate and filamentary structures J. E. HILLIARD	10
Stereological quantitation of cellular membrane systems E. R. WEIBEL	12

CONTRIBUTED PAPERS

Image analyzing method with a mini-computer Y. HIRANO, K. SUZUKI and M. FUJISAWA	14
An attachment to a scanning electron microscope/microprobe analyser for obtaining quantitative stereological information V. E. CHURCH and J. G. NAPIER	16
Molecular and particle weight determination by counting L. BACHMANN, H. FRITZMANN and W. W. SCHMITT-FUMIAN	18
Elemental distribution in biological materials by means of the scanning electron spectrometric microscope R. K. HART	20
Quantitative estimate of the contour length of phage G DNA G. DONELLI, E. DORE and C. FRONTALI	22
Stereology of spermiogenesis in <i>Bankia australis</i> (Bivalvia, Mollusca) J. D. POPHAM	24

Chemical information from transmission electron microscope P. SADIUKHIAN and D. G. DRUMMOND	26
--	----

CRYOTECHNIQUES

SYMPOSIUM

SYMPOSIUM LECTURES

Interpretation of freeze-etch results D. BRANTON	28
Freeze-fracturing at liquid helium temperature for freeze-etching U. B. SLEYTR	30
Electron microscopy and electron diffraction of wet biological materials D. F. PARSONS	32
Some applications of cryo-ultramicrotomy K. T. TOKUYASU	34

CONTRIBUTED PAPERS

Importance of stereoscopic methods in the study of biological specimens prepared by cryotechniques R. L. STEERE, E. F. ERBE and J. M. MOSELEY	36
Freeze-cleavage of cell monolayers grown <i>in vitro</i> K. H. PFENNINGER	38
Size and shape of hydrated protein molecules L. BACHMANN, E. JUNGER, K. LEDERER and W. W. SCHMITT-FUMIAN	40
Ultrastructural preservation related to rapidity of freezing G. P. DEMPSEY	42
Observation technique of hydrated biological materials using environmental cell A. FUKAMI, K. FUKUSHIMA and S. MURAKAMI	44
Wet biological specimens in the electron microscope. Transfer and observation at low temperature H.-G. HEIDE and S. GRUND	46
Environmental considerations for mammalian cells prepared for live examination in the hydration chamber of the electron microscope N. C. LYON and D. F. PARSONS	48
A wet stage modification to a scanning electron microscope V. N. E. ROBINSON	50
Dry cryo-sectioning of human and animal tissue at a very low temperature (-140°C) L. SEVÉUS and L. KINDEL	52
Cryo-ultramicrotomy of tissues in dimethylacetamide J. D. MCLEAN	54

The ultrathin section for low temperature (111) T. SAKAI, S. SHIMAKURA and H. SAKAMOTA	56
Experiences with a cooled transfer stage between the cryo-ultramicro- tome and the SEM G. LECHNER	58
Eine neue methode zur stabilisierung von kryo-ultradünnschnitten W. F. GEYMAYER	60
A complementary-replica technique in the frozen-cloven retina A. TONOSAKI and T. Y. YAMAMOTO	62
Hydrated, crystalline protein structure observed at high resolution in frozen, thin specimens K. A. TAYLOR and R. M. GLAESER	64

X-RAY MICRO-ANALYSIS IN BIOLOGY

SYMPOSIUM

SYMPOSIUM LECTURES

Electron microbeam analysis in biological and medical research studies A. J. TOUSIMIS	66
Localization of inorganic ions in plant cells and tissues by use of electron microprobe analysis A. LÄUCHLI	68
X-ray microanalysis of thin sections—spatial resolution and quanti- tative analysis J. C. RUSS and N. C. BARBI	70
Quantitative microprobe analysis of <i>Lycopersicon</i> using macrocyclic polyether complexes with NaCNS in epoxy resin as organic standards A. R. SPURR	72
X-ray microanalysis of frozen-dried and frozen-hydrated biological specimens A. T. MARSHALL	74

CONTRIBUTED PAPERS

The scanning electron microscope as an analytical tool N. C. YEW and D. E. PEASE	76
Combined SEM and X-ray spectrometry of intracellular inorganic particles in lung tissue K. MIYAI, P. J. FRIEDMAN, R. M. WAGNER and P. M. ELLIOTT	78
The application of a TEM in conjunction with X-ray microanalysis to detect the presence of asbestos in animal tissue R. D. PONTEFRACT and H. M. CUNNINGHAM	80
Microanalytical characterization of hair using scanning electron microscopy J.-P. CARTEAUD, M. D. MUIR and P. R. GRANT	82

Subcellular distribution of heavy metals by means of an analytical electron microscope V. MIZUHIRA, Y. FUTAESAKU, M. KIMURA, S. FUJIOKA and H. YOTSUMOTO	84
Identification of silver particles in skin of the patient with argyria by means of X-ray microanalysis Y. HORI, S. MIYAZAWA, T. YAMAMOTO, T. WATANABE and T. FUKUOKA	86
Contrôle hypophysaire des variations de la teneur en iode organique de la thyroïde chez la larve du xénope. Etude au moyen de la microsonde a rayons X E. REGARD, J. HOURDRY and P. BOUMATI	88
X-ray microanalysis of the human placenta R. HERBST, A.-M. MULTIER-LAJOUS and M. GRASSERBAUER	90
Occurrence and localization of Zn in the accessory axonemal elements of rat spermatozoa B. BACCETTI, A. G. BURRINI and V. PALLINI	92
X-ray microanalysis of calcium in nuclei of skeletal and cardiac muscle R. YAROM, P. D. PETERS and T. A. HALL	94
X-ray microanalysis of the components of the avian cardiac muscle T. MAKITA and M. YAMAMOTO	96
X-ray localization of iron and uranium transported across the leaf of the carnivorous pitcher plant B. J. PANESSA, J. F. GENNARE JR., J. KUPTSIK and F. CARDONE	98
X-ray analysis of microelements in seeds A. V. HOFSTEN	100
The use of TEM with X-ray microanalysis to compare ultrastructural changes in germinating bacterial spores with alterations in their chemical composition R. D. PONTEFRACI and G. BERGERON	102
X-ray microanalysis in the SEM for the determination of elements in modern and fossil micro-organisms M. D. MUIR, R. A. SPICER, P. R. GRANT and R. GIDDENS	104
Röntgenmikrographische Untersuchungen von anorganischen und biologischen Präparationen im rasterelektronenmikroskop H. R. F. HORN, W. SIXL and H. G. WALTINGER	106

IMMUNO-TECHNIQUES

SYMPOSIUM

SYMPOSIUM LECTURES

Immuno-electron microscopy with ferritin conjugates S. J. SINGER, R. G. PAINTER and K. T. TOKUYASU	108
Hybrid antibodies in immuno-electron microscopy U. HÄMMERLING, A. POLLIACK and E. DEHARVEN	110

CONTRIBUTED PAPERS

Topography of lymphocyte surface immunoglobulin : Scanning electron microscopy of indirect immuno-latex label
D. S. LINTHICUM, K. MIYAI, S. SELL and R. M. WAGNER . . . 112

Ferritin labelling of thin sections by a "sandwich" technique
M. R. DICKSON and A. J. WICKEN . . . 114

Horseradish peroxidase as immunogen and tracer for cytological studies of immune responses
W. D. KULMANN . . . 116

Distinguishable ferritin labels for the simultaneous localization of two kinds of sites
J. L. FARRANT, S. R. GLANVILL and J. D. McLEAN . . . 118

New metal-labelled antibody method
K. YASUDA . . . 120

A new virus from children with acute gastroenteritis
I. H. HOLMES and B. J. RUCK . . . 122

Ultrastructural localization of anti-horseradish peroxidase antibody in the adrenocortical sinusoids
M. AIBA, H. SUZUKI, T. OHTANI and K. WATANABE . . . 124

CYTOCHEMISTRY

SYMPOSIUM

SYMPOSIUM LECTURES

Polar embedments which retain lipids in sections
D. C. PEASE . . . 126

Ultrastructural localization and identification of antimonate-reactive ion in normal and experimentally modified mammalian tissues
S. S. SPICER and J. A. V. SIMSON . . . 128

Ultrastructural tracers as used in studies of glomerular permeability
M. KARNOVSKY . . . 130

High resolution enzyme cytochemistry
S. J. HOLT . . . 132

CONTRIBUTED PAPERS

Metal complexes as selective stains for electron cytochemistry
D. E. ALLEN . . . 134

The simple staining technique for 1,2-glycol groups by alkaline bismuth solution, unlike demonstration of periodate reactive sites
Y. SHINJI, E. SHINJI and V. MIZUHIRA . . . 136

Phosphotungstic acid (PTA) reaction on the cell surface
K. OGAWA and A. TSUCHIYA . . . 138

A new cytochemical method for catalase using 2,7-fluorenediamine K.-I. OHKAWA	140
Fixation mechanism of tannic acid and D-catecin. Application 1: a detection of oxidase activity by the use of D-catecin Y. FUTAESAKU and V. MIZUHIRA	142
Enzyme activities after acrolein fixation T. SAITO and H. KATO	144
Osmotic pressure and other factors influencing the fine structure and localization of acid phosphatase in glutaraldehyde-fixed cells and tissues B. ARBORGH, U. T. BRUNK and J. L. E. ERICSSON	146
Fine structural localization of choline acetylase activity in the nervous tissue of the rat Y. AGO and K. OGAWA	148

SPECIMEN PREPARATION, GENERAL

Microsomal enzymes in the rat adrenal cortex J. FRÜHLING, F. PECHEUX and W. PENASSE	150
SEM of light microscope oriented injection replicas J. A. NOWELL and W. S. TYLER	152
The application of "SUMP" method to the preparation of specimens in the scanning electron microscopy R. UEDA and Y. YAMANE	154
Non-aqueous negative staining for the visualization of epoxy-em- bedded tissue in negative contrast H. MIYAWAKI	156
The influence of dimethyl sulfoxide on biological ultrastructure E. B. SANDBORN, H. R. STEPHENS and M. BENDAYAN	158
Kathodolumineszenz eingefärbter biologischer Proben W. KOCH, A.-M. MULTIER-LAJOUS and R. HERBST	160
Scanning transmission electron microscopy of unstained and selec- tively stained biological specimens A. V. CREWE, J. P. LANGMORE, M. K. LAMVIK and J. M. PULLMAN	162
Contrasting biological material using barium permanganate N. A. PYLIOTIS	164
High-voltage electron microscopy in biological research K. R. PORTER and M. FOTINO	166
Replication of wet objects S. BASU and D. F. PARSONS	168
Further development in incorporation of the automated tissue pro- cessing devices for biological electron microscopy K. AIHARA, G. YAJIMA, M. TABATA, K. SUZUKI and H. MORI	170
Embedding and thin-sectioning of X-ray aligned protein crystals R. LANGER, CH. POPPE, H. J. SCHRAMM and W. HOPPE	172

Durchstrahlungselektronenmikroskopische Untersuchungen von im rastermikroskop ausgewählten Bereichen D. I. J. BLAHA and F. GRASENICK	174
Surface charge modification by ion exchange in single crystal speci- men supports W. BAUMEISTER and M. HAHN	176
The advantages of a long focal objective in the study of biological tissue B. E. P. BEESTON and D. CHESCOE	178
Ultra-fine grids for specimen supporting media in high resolution electron microscopy M. TANAKA, S. HIGASHI-FUJIME and R. UYEDA	180
Transport empfindlicher elektronenmikroskopischer Proben unter Vermeidung von Kontamination I. A. F. ALDRIAN and H. A. ZEDLACHER	182
Quantitation and the estimation of section thickness with a Faraday- cage and from plates J. R. CASLEY-SMITH and K. W. CROCKER	184

MEMBRANES I: STRUCTURE AND INTERRELATIONSHIPS

SYMPOSIUM

SYMPOSIUM LECTURES

The dynamics of membrane components S. J. SINGER	186
Membrane biogenesis R. J. BARNETT	188
Fine structural analysis of cell movements and interactions J. P. REVEL	190
Freeze-etching studies on membranes and junctions S. BULLIVANT	192

CONTRIBUTED PAPERS

Fine structure of the membranes of the Golgi complex J. M. STURGESS, M. A. MOSCARELLO and W. J. VAIL	194
Structural organization of mammalian retinal photoreceptors J. OLIVE and M. RECOUVREUR	196
Electron diffraction of wet biological membranes S. W. HUI and D. F. PARSONS	198
Appearance of membranes in pea roots following killing treatments M. S. BUTTROSE and J. G. SWIFT	200

Particle movements associated with unstacking and restacking of chloroplast membranes <i>in vitro</i> . A freeze-cleave and deep-etch study	
L. A. STAEHELIN and K. R. MILLER	202
The coupling factor : Direct localization on chloroplast membranes	
K. R. MILLER and L. A. STAEHELIN	204
Demonstration of sugar residues on the cellular membranes as revealed by the immuno-ferritin staining method (IV)	
H. HIRANO, T. IRIMURA, F. NISHIYAMA and T. OSAWA	206
Relations possible entre particules intramembranaires révélées par cryofracture et particules cytoplasmiques tapissant la membrane	
CH. NOIROT et C. NOIROT-TIMOTHÉE	208
Rodshaped particles in epithelial free surface membranes	
H. HÖRANDNER, D. KERJASCHKI and L. STOCKINGER	210
Morphology of Acanthamoeba plasma membrane	
B. BOWERS and T. E. OLSZEWSKI	212
Ultrastructure of highly purified preparations of (Na ⁺ + K ⁺)-ATPase from the outer medulla of the rabbit kidney	
A. B. MAUNSBACH and P. L. JØRGENSEN	214
Interaction of liver cell cytoplasmic glycoproteins with microsomal phospholipids	
F. AUTUORE, H. SVENSSON, A. F. BERGSTRAND and G. DALLNER	216
Electron microscopic and X-ray diffraction studies of membrane model systems	
J. D. ROBERTSON and M. J. COSTELLO	218
Parietal cell ultrastructure in relation to gastric acid secretion in mice	
G. C. SCHOFIELD and S. ITO	220
Golgi apparatus of guinea pig pancreas : Ultrastructure <i>in situ</i> and in cell fractions	
D. J. MORRÉ, S. HOCKER and C. E. BRACKER	222
Plasma membrane differentiations in the midgut of a lepidopteran larva, <i>Ephestia kuhniella</i>	
N. E. FLOWER	224
A structure-function correlation in gap junctions of crayfish	
C. PERACCHIA	226
Jonctions septées et jonctions continues chez les insectes. Etude après imprégnation par le lanthane et par cryofracture	
C. NOIROT-TIMOTHÉE and CH. NOIROT	228
Ultrastructural and biochemical characterization of junctional complexes in animal cells	
I. DUNIA and E. L. BENEDETTI	230
"Membrane penetration." Observations on the glycolipid pathway in Fabry's disease	
I. MOLENAAR, M. RUITER and I. STOKROOS	232

MEMBRANES II: CELLULAR INTERACTION AND RECOGNITION

SYMPOSIUM

SYMPOSIUM LECTURES

Nerve growth cone plasmalemma—its structure and development K. H. PFENNIGER, M. B. BUNGE and R. P. BUNGE	234
Observations on cell surface coats S. ITO	236
Control of cell surface topography M. J. KARNOVSKY	238
Freeze-fracture particle arrays in membrane interactions P. SATIR	240

CONTRIBUTED PAPERS

The surface coat on mouse lymphocytes V. SANTER	242
Localized membrane changes in lymphocytes and macrophages interacting with each other and with antigen E. SHELTON and J. M. ORENSTEIN	244
The fenestra dorsalis of <i>Allanaspides</i> (Crustacea : Syncarida) — cytological changes in response to elevated NaCl levels R. SWAIN and P. S. LAKE	246

THE EUKARYOTIC CHROMOSOME

SYMPOSIUM

SYMPOSIUM LECTURES

Ultrastructure of specialized chromosome regions : kinetochores heterochromatin and nucleolus organizers B. R. BRINKLEY, M. L. MACE and M. MCGILL	248
High voltage electron microscopy in the analysis of chromosome organization H. RIS	250
Cytogenetics with the electron microscope D. VON WETTSTEIN	252
Structure of a unique miniature chromosome J. D. GRIFFITH	254

NUCLEUS CELL DIVISION

CONTRIBUTED PAPERS

Kinetochores microtubules in mitosis C. JENSEN and A. BAJER	256
--	-----

Mechanism of nucleolar segregation — differences in effects of actinomycin D and cycloheximide T. UNUMA, R. SENDA and M. MURAMATSU	258
Possible origin and function of nuclear bodies in human materials G. YASUZUMI	260
Ultrastructure of the nucleolar cycle in plant cells : specific detection of nucleolar material and its fate in mitosis S. MORENO DIAZ de la ESPINA, M. C. RISUENO, J. C. TANDLER and M. E. FERNÁNDEZ-GÓMEZ	262
Mitotic arrest following isoprenaline J. M. RADLEY and I. M. KOHLMAN	264
Arrowhead decoration of filaments in spread chromosomal material S. R. BLECHER	266
The electron microscopy of the lampbrush chromosomes of <i>Triturus cristatus</i> M. R. MOTT and H. G. CALLAN	268
Histone and polyaminoacid DNA interactions at molecular and cellular levels B. L. REID and P. M. BLACKWELL	270

NERVOUS SYSTEM

NEUROHUMORAL STORAGE AND RELEASE

SYMPOSIUM

SYMPOSIUM LECTURES

Localization and distribution of neurotransmitters and related substances in the peripheral and central nervous system T. HÖKFELT, O. JOHANSSON and Å. LJUNGDAHL	272
The presynaptic cytonet concept E. G. GRAY and R. A. WILLIS	274
Life cycle of adrenergic synaptic vesicles L. B. GEFFEN and A. OSTBERG	276
Neurosecretion from the posterior pituitary lobe J. J. DREIFUSS, K. AKERT, C. SANDRI and H. MOOR	278

NERVOUS TISSUE

CONTRIBUTED PAPERS

Structure and function of presynaptic inhibition K. UCHIZONO	280
Electron microscope immunohistochemical localization of growth hormone-release inhibiting hormone (Somatostatin), neurophysin and vasopressin in the rat hypothalamus and neurohypophysis G. PELLETIER and R. LECLERC	282

Structural organization of the excitable membrane of the <i>Torpedo marmorata</i> electrical organ J. CARTAUD	284
Rhythmical secretory activity in neurons of <i>Ciona intestinalis</i> (Tunicata) under various experimental conditions D. GEORGES	286
Localization of ³ H-choline incorporated <i>in vivo</i> into myelin F. A. RAWLINS	288
Interaction between neuroblastoma and skeletal muscle cell lines in tissue culture A. J. HARRIS and W. G. HOPKINS	290
Two types of interneurons in the cardiac ganglion A. YAMAUCHI	292
Ultrastructural and cytochemical studies of merkel cell granules in the mouse epidermis H. LIANG, C. CHAO and D. W. CHOU	294
The nature and origin of endocytic cells in damaged brain F. BALDWIN	296
Ultrastructural changes in axon-sheath relationships in myelinated nerves after guanethidine-induced sympathectomy J. W. HEATH and G. BURNSTOCK	298
Ultrastructural changes of the nerve tissue in the murine muscular dystrophy E. OKADA and V. MIZUHIRA	300
Some ultrastructural changes in the olfactory bulb of senile rats R. F. ESTABLE-PUIG, J. F. ESTABLE-PUIG and T. A. READER	302
Ultrastructural observations on the epithalamus and tegmentum mesencephali of the frog " <i>Rana esculenta</i> " after treatment with 'LSD' M. KEMALI and D. KEMALI	304
An ultrastructural study of neuroglia in wallerian degeneration D. A. FERNANDO	306
Experimental studies on the innervation of the carotid body G. H. VÁZQUEZ-NIN, I. COSTERO, R. AGUILAR, M. GONZÁLEZ DEL PLIEGO and O. ECHEVERRÍA	308
Scanning electron microscopy of human spinal cord S. SIEW	310
Triple cones in the chick retina V. B. MORRIS	312
Ultrastructure of olfactory epithelium in embryonic chicks M. OKANO, M. FURUTA, A. TSUKISE and Y. SUGAWA	314
The effects of normal laboratory illumination on retinal ultrastructure and on pattern and absolute threshold discrimination in the albino rat K. M. JONSON, C. D. SHOREY and R. A. CHAMPION	316
Transmitter histochemistry of the median eminence T. HÖKFELT and K. AJIKA	318

Cilia and basal body attachments in sense organs V. C. BARBER	320
Reinnervation of superior cervical ganglion of the cat by postgangli- onic sympathetic fibres B. CECCARELLI, F. CLEMENTI, P. MANTEGAZZA, V. PERRI and O. SACCHI	322
Electron microscopy of the synaptic organization in the interpedun- cular nucleus of the frog ' <i>Rana esculenta</i> ' M. KEMALI	324
Ultrastructure of the closing of the neural duct in the chicken embryo R. GONZÁLEZ SANTANDER and G. MARTINEZ CUADRADO	326
The gaboul method and its contribution to the ultracytochemical study of the cerebellar cortex O. J. CASTEJÓN and H. V. CASTEJÓN	328

INTRACELLULAR FILAMENTS, CELL MOVEMENT

SYMPOSIUM

SYMPOSIUM LECTURES

The microtubule clear space O. BEHNKE	330
Recent observations on the organization of sperm flagella D. W. FAWCETT, D. S. FRIEND, M. PRICE and R. W. LINCK	332
Topographic changes associated with the viral transformation of normal cells to tumorigenicity V. FONTE and K. R. PORTER	334

CONTRIBUTED PAPERS

Ultrastructural observations on CHO cells enucleated with cyto- chalasin B J. W. SHAY and M. R. GERSHENBAUM	336
Three dimensional fine structure of critical point dried whole cultured cells I. K. BUCKLEY	338
Fine structure of the microtubules by means of the tannic acid fixation V. MIZUHIRA and Y. FUTAESAKU	340

CYTOPLASMIC ORGANELLES

Entero-chromaffin cells. A. Substructure of granules. B. Intracytoplas- mic filaments N. S. RAO	342
---	-----

Effect of ACTH on the growth of rat adrenal zona fasciculata mitochondria G. G. NUSSDORFER, G. MAZZOCCHI, P. REBUFFAT, A. S. BELLONI and V. MENEGHELLI	344
Electron microscope radioautography of intramitochondrial nucleic acid syntheses in mammalian cells <i>in vitro</i> T. NAGATA	346
Structure of cytoplasmic 80 S and mitochondrial 60 S ribosomes from <i>Locusta migratoria</i> F. MILLER, W. KLEINOW and W. NEUPERT	348
The morphometry of mitochondria during blockade of their gene expression in meristematic cells M. C. RISUENO, G. GIMÉNEZ-MARTÍN and C. de la TORRE	350
Spermiogenesis in the oriental fruit fly W.-Y. LEE	352
Ultrastructural changes in cells exposed to toxic chemicals H. W. FISHER and T. TAYLOR	354
Electron microscopy of mitochondria and MT-DNA of brain of normal and irradiated rats R. P. CHOUDHURY and P. SADHUKHAN	356
Cortisol-induced alterations in ultrastructure and in protein synthesis of liver tumors J. CREEMERS and W. de LOECKER	358
The ultrastructural cytochemistry of respiratory enzymes in cochlear hair cell mitochondria of the guinea pig G. J. SPECTOR, C. CARR and I. K. ARENBERG	360
Changes in surface morphology of P815Y mastocytoma cells during the cell cycle S. KNOTTON, M. C. B. SUMNER and C. A. PASTERNAK	362
A structural study of developing chloroplasts in <i>Euglena</i> I. OPHIR, A. TALMON and Y. BEN-SHAUL	364
A quantitative analysis on the effects of reserpine on dense-cored vesicles of the carotid body O. ECHEVERRÍA, G. H. VÁZQUEZ-NIN, R. AGUILAR and B. CHÁVEZ-LARA	366
Intracellular collagen — Phagocytosis or intracellular aggregation? B. W. OAKES	368
Evidence for photosensory role of vesicles in the retina of a pulmonate snail R. M. EAKIN, J. L. BRANDENBURGER, C. MORTENSEN and D. KING	370
Ultrastructural analysis of the crystalline matrix of lizard gliosomes G. DONELLI, V. D'UVA and L. PAOLETTI	372
Structure and function of annulate lamellae in the oocytes of the dragonfly <i>Pantala flavescens</i> C. M. S. DASS	374

A method to isolate and to subfractionate lysosomes from rat liver H. PLATTNER and R. HENNING	376
Specificity of organelle recognition in the autophagic process S. J. HOLT and R. N. MELMED	378
Acid phosphatase in keratinising wool follicle cells D. F. G. ORWIN	380
The "Catalysome" of insect and vertebrate adipose tissue P. H. TYCHSEN, M. LOCKE and A. K. SYKES	382
The mechanism of proteolysis in rat liver lysosomes S. YUMOTO	384

MUSCLE

Leptomeres in intrafusal muscle fibres of chicken muscle spindles M. N. ADAL	386
Freeze fracturing of protein filaments and fibrils D. G. RAYNS	388
Peroxisomes (microbodies) containing catalase in myocardium : cytochemical, biochemical, and morphological evidence V. K. HERZOG and H. D. FAHIMI	390
Fine structure of earthworm blood vessels with special reference to the myoendothelial cells and their innervation Y. UEHARA, G. R. CAMPBELL and G. BURNSTOCK	392
Development of smooth muscle <i>in vitro</i> G. R. CAMPBELL, J. H. CHAMLEY and G. BURNSTOCK	394
Ultrastructure and physiology of the innervation of smooth muscle in tissue culture D. M. FRY and G. BURNSTOCK	396
The structure of overstretched beef muscle fibres R. H. LOCKER and N. G. LEET	398
Myocardium ultrastructure in various ways of isolated heart con- servation T. S. KOBIDZE and Z. G. TSAGARELY	400

BLOOD CELLS AND VESSELS

Fine structure of endothelial cells as revealed by frozen-fractured preparations K. YAMAMOTO, S. FUJIMOTO and Y. TAKESHIGE	402
Quantitative morphology of fenestrated capillaries in the Jejunum J. R. CASLEY-SMITH, P. J. O'DONOGHUE and K. W. J. CROCKER	404
Blood platelet monitoring using negative staining R. G. WRIGHT	406
Enzyme cytochemical study of rat liver endothelial and Kupffer cells E. WISSE, J. VAN DER MEULEN, J. J. EMEIS and W.TH. DAEMS	408

Rat liver cells and associated spaces of Disse as revealed by scanning electron microscopy P. M. MOTTA and K. R. PORTER	410
A scanning microscopic study of the vascular sinuses of the rabbit bone marrow T. OGAWA, M. HASEGAWA and T. FUJIWARA	412
Scanning electron microscopic study on erythrocytes of new born infants H. SAKAGUCHI and F. SAKAGUCHI	414
Fine structure of human neutrophilic granulocytes and leukemic cells Y. WATANABE and Y. ENOMOTO	416
A comparison of the morphology of stimulated and unstimulated platelets : A study by freeze-etching T. BISTRICKI, R. L. KINLOUGH-RATHBONE and J. F. MUSTARD	418
Differentiation of human peripheral blood lymphocytes by scanning electron microscopy G. E. KELLY, C. E. NOCKOLDS and A. G. R. SHIEL	420
Cytophysiological reactions of insect blood cells with foreign surfaces A. C. CROSSLEY	422
Fine structure of pericytes in the rat brain S. MORI	424
Ultrastructural characteristics of murine multinucleate foreign body giant cells J. M. PAPADIMITRIOU	426

ORGANS

Fine structure of the Sertoli cell throughout the cycle of the seminiferous epithelium in the normal and cryptorchid rat J. B. KERR and D. M. DE KRETZER	428
The ultrastructure of mature sperms of the snail <i>Biomphalaria glabrata</i> (Mollusca, Gastropoda) E. W. KITAJIMA and W. L. PARAENSE	430
Ultrastructural correlation of Leydig cell maturation and initiation of spermatogenesis B. GONDOS and R. H. RENSTON	432
Three-dimensional structure of crystalline insulin granules in B-cells of pancreatic islets N. WATARI	434
Immuno-histochemical electron microscopic studies of the biosynthesis of human thyroid hormone Y. HATANAKA, M. TABATA, K. AIHARA, M. MORIYAMA and G. YAJIMA	436
An electron microscopic study on changes in the pituitary gland of old albino rats H. UEERBERG, L. LÜTZEN and R. STOLDT	438

Fine structural analyses of the serous secretory granules in the salivary glands of Mongolian gerbil A. ICHIKAWA and M. ICHIKAWA	440
Food uptake and intracellular digestion in a gastropod digestive gland E. L. NELSON	442
Ultrastructural changes of the gastric glands after administration of insulin H. SAITO, K. TOOI, Y. MORIYAMA, M. MIKI, A. SHIROTA, G. ASANO, K. FUKUSHI, G. YAJIMA, K. KIMURA and M. YOSHIDA	444
Scanning electron microscopy in the study of the newborn lung J. GRONIEWSKI and M. WALSKI	446
The gill lamellae of the shrimp <i>Paratya tasmaniensis</i> (Atyidae : Crustacea). Normal ultrastructure and changes with low levels of cadmium P. S. LAKE and V. J. THORP	448
An electron histochemical study of the alveolar lining layer with reference to pulmonary surfactant K. AIHARA, G. YAJIMA, Y. HATANAKA, M. MORIYAMA, M. TABATA, Y. KANASUGI, T. SAITO and M. SAITO	450
The structure and function of the rat renal papilla R. T. GEMMELL and B. D. STACY	452
On the fine structure of the integument epidermis of the prawn <i>Palaemon serratus</i> (Crustacea Decapoda) C. CHASSARD-BOUCHAUD, M. HUBERT and P. NOEL	454
Ultrastructural localization of glycoproteins in dental matrices using Ruthenium red H. J. ORAMS	456
Ameloblastic secretion in calcifying teeth of sharks N. E. KEMP	458
An aspect of the osteoblasts and osteocytes appeared in experimental tooth movement A. HIRASHITA and Y. KUWABARA	460
The incorporation of sulphur into glyco-protein macromolecules in the Fallopian tube and uterus of the marsupial <i>Trichosurus vulpecula</i> C. D. SHOREY, R. L. HUGHES, N. T. BARKER, F. CARRICK, R. ARNOLD and G. LYNRAVEN	462
The ultrastructure of the human placenta 23 days after conception R. HERBST and A.-M. MULTIER-LAJOUS	464
Passage of proteins across the epithelium of the mammary gland in lactating mice G. I. SCHOEFL and A. K. LASCELLES	466
Transmission electron microscopic and freeze-etch studies of bone development, with special reference to the Lamina Limitans T. KUROKAWA, H. NISHIKAWA and T. ITOH	468

Studies on elastic material in the human tracheal mucosa (Comparative bright and dark field illumination electron microscopy)	
L. STOCKINGER	470
A critical study of ³ H-cholesterol distribution in the rat adrenal cortex as seen by autoradiography on the electron microscopical level	
J. FRÜHLING, W. PENASSE, G. SAND, F. PECHEUX and A. CLAUDE . . .	472
The ultrastructure of different types of interstitial cells in the rat renal medulla studied after improved fixation methods	
S.-O. BOHMAN	474

PATHOLOGY

Surface changes in the endocardium overlying myocardial infarcts	
J. B. GAVIN, E. E. WHEELER and P. B. HERDSON	476
Venules in lymphoid tissue during an immune response	
S. TOMONAGA, G. I. SCHOEFL and H. R. P. MILLER	478
Measuring the effects of low oxidant concentrations on monkey lungs with TEM and SEM	
R. F. BILS	480
Alteration of collagen fibrils in the direct inguinal herniation in men	
C. N. SUN, H. J. WHITE, P. V. WACH and R. C. READ	482
Ultrastructural localization of silver, mercury and tin corrosion products of dental amalgam in granulation tissue	
G. ELLENDER and K. N. HAM	484
Electron microscopic studies of the mucosa of human chronic sinusitis	
T. SAKAGUCHI and Y. SATO	486
The importance of glomerular epithelial lesions in experimental nephrotic syndrome	
N. CARROLL, G. W. CROCK, C. C. FUNDER, C. R. GREEN, K. N. HAM and J. D. TANGE	488
Fine structure of so-called mixed tumor of the skin	
T. SHIRAI, W. KITAMURA and K. SAKAMOTO	490
Bronchial cellular surface changes in tumors : A scanning electron microscopic study	
I. ALEXANDER, I. McCONCHIE, C. R. HUNTER and D. EHRLICH . . .	492
Ultrastructural study of basement membrane in human cervical cancer	
M. B. KETKAR, S. M. SIRSAT and R. M. RAJPAL	494
Ultrastructural study of human oral cancer using lanthanum nitrate	
M. S. PALEKAR and S. M. SIRSAT	496
Syringocystadenoma papilliferum	
K. NIIZUMA	498
Transmission and scanning electron microscopy of the experimental granulosa cell tumor in mice	
I. M. BACCARINI	500

The use of immuno-electron microscopic technique in the study of experimental cancer metastases E.-C. CHEW, A. C. WALLACE and E. HUNTER	502
Allergic aspermatogenesis in the guinea pig. The reaction site of the antitestis antibody T. NAGANO and K. OKUMURA	504
The plasma membrane of skeletal muscle cells in the pathological state. Freeze etch studies U.-P. KETELSEN	506
Hypertrophy of thymic epithelium following removal of submaxillary glands H. HOFFMAN and E. BURNETT	508
Identification of submicroscopic asbestos fibrils in tissue by analytical electron microscopy Y. SUZUKI, T. ONO, S. AITA, T. HOSHINO and H. IWATA	510
Ultrastructural pathology of the synapse J. F. ESTABLE-PUIG, R. F. ESTABLE-PUIG, T. A. READER and C. ROMERO	512
A correlative electron microscopic and biochemical studies on cholelithiasis with reference to the mucopolysaccharide in gall bladder A. SHIROTA, M. MIKI, M. YOSHIOKA, Y. MORIYAMA, H. SAITO, G. ASANO, K. AIHARA and G. YAJIMA	514
The morphological diagnosis of gastric lesions with the scanning electron microscope A.-M. MULTIER-LAJOUS and R. HERBST	516
Ultrastructural changes in cadmium toxicity M. W. WELDON, R. MEADOWS and R. H. MEFHAM	518
On the formation process and the nature of giant liver mitochondria induced by cuprizone T. WAKABAYASHI, M. ASANO and H. SOBAJIMA	520
Giant mitochondria appearing in the proximal tubule cell of human diseased kidneys T. SUZUKI, M. FURUSATO and S. TAKASAKI	522
Ultrastructural changes in the kidneys in experimentally induced thermal burns O. FUKUDA, K. ARAI, T. HIRAYAMA, G. ASANO, K. AIHARA and G. YAJIMA	524
Ultrastructural alterations of the guinea pig adrenal cortex by diphtheria toxin E. MÄUSLE	526
Ultrastructural changes in the liver of experimentally induced thermal burns M. HAYASHI, T. HIRAYAMA, M. TOOYAMA, G. ASANO and G. YAJIMA	528
Effects of bleomycin to cancers in the head and neck Y. HYO, T. HOSHIYA and Y. YAMANAKA	530

Ultrastructure and cytochemistry of the proximal convoluted tubule cells in rat kidney caused by DMN carcinogenesis R. SUGIHARA, S. SUGIHARA JR., K. HIRAO and N. ITO	532
Drug-induced phospholipidosis in rats H. TAKAHASHI, T. TSUJII and M. OKU	534
Damage of hepatocytes after application of long-acting corticosteroids W. E. MICHAELIS, U.-P. KETELSEN and M. SCHNEIDER	536
An electron microscopic observation on the cytological changes in experimental drug-induced lipidosis Y. TASHIRO, Y. ENOMOTO and Y. WATANABE	538
Computer-aided assessment of pathological changes observed by electron microscopy J. R. WALTON	540
Some ultrastructural aspects of the central nervous system in an adult and juvenile type lipidoses R. S. BHARATI	542
The abnormal chondrogenesis in the insulin-induced micromelia of the fowl studied by ultrahistochemical methods T. DAIMON and V. MIZUHIRA	544
Quantitative ultrastructure of retinal capillary junctions L. SOSULA	546
Muscle capillaries of diabetic patients R. E. YODAIKEN	548
The disappearance of the blood vessel mucopolysaccharide lining after X-irradiation D. E. PHILPOTT and A. TAKAHASHI	550
Endotoxin-induced vascular endothelial injury in the dog R. G. GERRITY, B. A. CAPLAN, C. J. SCHWARTZ and M. RICHARDSON	552
Ultrastructural studies of the vascular changes in rheumatoid diseases K. INAGAKI, M. TABATA, Y. HATANAKA, G. ASANO, K. AIHARA and G. YAJIMA	554
The fine structure of intestinal epithelial cells of mice irradiated after treatment with WR2721 J. C. HAMPTON and P. H. GRUNDY	556

LOWER PLANTS AND FUNGI

SYMPOSIUM

SYMPOSIUM LECTURES

The endomembrane system of fungi C. E. BRACKER	558
Fine-structural aspects of reproduction in Fungi Imperfecti T. M. HAMMILL	560

Scanning electron microscopy of the sporulation and germination in some fungi	
M. FUKUTOMI	562
Scale formation : A special function of the golgi apparatus in algae	
Ø. MOESTRUP	564
The Cryptophyta in relation to phylogeny and photosynthesis	
A. D GREENWOOD	566
Stereology, 3-dimensional reconstructions and X-ray microanalysis in the study of <i>Chlorella</i> cells	
B. E. S. GUNNING, A. W. ATKINSON JR., P. C. L. JOHN, R. BRIGHTWELL and R. CHEESEWRIGHT	568

CONTRIBUTED PAPERS

Subcellular morphogenesis of <i>Endomyces geotrichum</i>	
C. E. BRACKER, E. E. BUTLER and C. M. MONTECILLO	570
Ultrastructural changes in the fruit-body development of <i>Agaricus bisporus</i>	
L.-P. LIN, Y. Y. LEE, J. C. FONG and S. I. HSIEH	572
Ultrastructural features of basidial ontogeny in <i>Volvariella volvacea</i>	
S.-T. CHANG and S. L. LING-WONG	574
Fine structure of <i>Pyricularia oryzae</i> — a fungus causing rice blast disease	
H.-K. WU, M. L. YAN and W. F. CHUNG	576
Ultrastructure of hydrocarbon-utilizable yeast cells	
M. OSUMI, S. FUKUI and T. NAGATANI	578
Ultrastructure of chlamydospore of <i>Candida albicans</i> as observed by freeze-etching	
K. TAKEO	580
Evaluation of hyphal tip sections for electron microscopy by projection charts	
H.-H. WANG, Y.-S. HOUNG, T. S. WU and L.-P. LIN	582
The role of microtubules in colony formation by the green algae <i>Pediastrum</i>	
H. J. MARCHANT	584
The effect of blue light on chloroplast number and thylakoid stacking in the marine diatom, <i>Stephanopyxis turris</i>	
M. L. VESK and S. W. JEFFREY	586
The caulerpalean thylakoid organising body	
M. A. BOROWITZKA and A. W. D. LARKUM	588
The cell wall of some green algae	
M. M. A. SASSEN	590
The intracellular morphology of yeast mitochondria studied by HVEM	
M. T. DAVISON and P. B. GARLAND	592

PLANT CELLS

Development of tapetal cells in <i>Avena sativa</i> L. M. W. STEER	594
Peripheral plant microtubules : a barrier role against vesicles L. GOOSEN-DE ROO	596
Fine structure and histochemistry of ancient viable and non-viable seeds N. D. HALLAM and D. J. OSBORNE	598
Ultrastructure of glandular hairs in traps of <i>Utricularia monanthos</i> B. A. FINERAN and M. S. L. LEE	600
X-ray microanalysis and distribution of halides in <i>Nitella translucens</i> R. F. M. VAN STEVENINCK, M. E. VAN STEVENINCK, T. A. HALL and P. D. PETERS	602
Development of suberized lamella in the mestome sheath of wheat leaves J. KUO and T. P. O'BRIEN	604
Development of the aleurone cells in the wheat grain J. KUO, I. N. MORRISON and T. P. O'BRIEN	606
The distribution of P-protein in mature sieve elements G. P. DEMPSEY	608
Lignification in sclerenchyma of <i>Liriodendron tulipifera</i> A. B. WARDROP	610
Studies on desiccation tolerant plants using non-aqueous fixation methods N. D. HALLAM and P. CAPICCHIANO	612
Cytology of differentiating laticifer II — Structures associated with cell surface M. A. ARRAES-HERMANS	614
Ultrastructure of mature latex vessels in <i>Hevea brasiliensis</i> J. B. GOMEZ	616
The leptoids of bryophytes : an example of plant cells with variable structures, ranging from parenchyma-like to phloem-like organization C. J. HÉBANT	618
Electron microscope observations of spore wall development in <i>Funaria hygrometrica</i> L. R. JARVIS	620
Caracteres ultrastructuraux et cytochuniques de l'enveloppe mucilageuse des meicytes d'une bryophyte : le <i>Platyhypnidium riparoides</i> L. GENEVES	622
Localization of nickel in <i>Hybanthus floribundus</i> J. L. FARRANT and J. D. MCLEAN	624
Ultrastructure and formation of fibrils in chromoplasts D. J. SIMPSON and T. H. LEE	626

Electron microscopical study on the heat and tetracycline responses, and ultrastructure of the pathogen complex causing citrus likubin disease	
H.-J. SU and S.-C. CHANG	628
A scanning electron microscopic study on the flower bud formation of satsuma mandarins (<i>Citrus unshiu</i>)	
M. SHIRAIISHI, T. NAGATANI and H. HIDAKA	630

VIRUSES

Thin-section and freeze-fracture studies on chloroplasts in TYMV-infected tissue	
T. HATTA	632
Electron microscopy on Epstein-Barr virus infection in human lymphoblastoid cells	
J. YAMAGUCHI, F. ARIJI and K. TAKUSAGAWA	634
Uptake and penetration of Chilo Iridescent Virus (CIV) in the "abortive" infection of mosquito cells <i>in vitro</i>	
S. BELLONCIK, G. DEVAUCHELLE and D. PRÉVOST	636
The dense granule of the pox viruses	
W. G. BANFIELD, G. KASNIC and C. W. LEE	638
The outer coat of the Rous sarcoma virus: a freeze-etch and freeze-fracture study	
S. C. GILLIES and T. HATTA	640
Qualitative and quantitative TEM studies on phage λ in thin sections	
K. G. LICKFELD, B. MENGE, B. HOHN and T. HOHN	642

BACTERIA, MICRO-ORGANISMS

Remarkable differences in the ultrastructure of the cell wall of toxigenic Clostridia	
J. WECKE, B. REINICKE and G. SCHALLEHN	644
A study of the three-dimensional structure of the tail of the E. coli phage T4 from electron microscope data	
P. R. SMITH and U. AEBI	646
Electron microscopic studies on the cell envelope of the elementary body of <i>Chlamydia organism</i>	
A. MATSUMOTO and N. HIGASHI	648
Fine structure of mesosomes of staphylococci	
T. TANINO, S. NISHIMURA, Y. YOKOTA, A. SUGANUMA and H. MORIOKA	650
Surface blebs on <i>Vibrio cholerae</i> cells	
S. N. CHATTERJEE and P. SUR	652

SEM APPLICATIONS, FREEZE-ETCH

Application of field emission source scanning electron microscope to microbiological specimens K. AMAKO, K. TAKEYA, T. NAGATANI and M. SAITO	654
Photoelectron emission microscopy of biological specimens W. ENGEL and S. GRUND	656
BIOSEM-ein optimales Konzept für die Analyse von Mikrostrukturen in der Biologie J. F. A. GULLASCH	658
Scanning electron microscope techniques in autoradiography G. M. HODGES, M. D. MUIR, H. H. WINKLER, A. W. CARBONELL and P. R. GRANT	660
Scanning electron microscopy of embryonic cell aggregates : cardiac and mixed retina-cardiac cell suspensions Y. SHIMADA, A. A. MOSCONA and D. A. FISCHMAN	662
Scanning electron microscopy of <i>Entamoeba histolytica</i> S. G. PAL	664
Freeze etching of lipid in spores of <i>Funaria hygrometrica</i> L. R. JARVIS	666
Oocyte ultrastructure of oviparous and ovoviviparous teleosts as revealed by freeze etching K.-J. GÖTTING	668

RADIATION DAMAGE (BIOLOGICAL)

Some factors influencing radiation damage in organic substances S. M. SALIH and V. E. COSSLETT	670
Radiation damage studies of membrane model systems by means of ATR-IR spectroscopy M. HAHN, U. P. FRINGELI and W. BAUMEISTER	672
The improved stability of an organic crystal in the Hitachi HV-1 high vacuum electron microscope R. S. HARTMAN, R. E. HARTMAN, H. ALSBERG and R. NATHAN	674
Progress in the high resolution electron microscope studies of alpha keratin M. G. DOBB, R. MURRAY and J. SIKORSKI	676
Radiation damage assessment by digital correlation of images J. FRANK, S. M. SALIH and V. E. COSSLETT	678
Radiation damage and energy analysis in the STEM M. S. ISAACSON, P. S. D. LIN and A. V. CREWE	680
Influence of molecular composition and heavy atoms on the damage of organic crystals T. KOBAYASHI, L. REIMER and J. SPRUTH	682
Further observations on reduction in section thickness caused by the electron beam R. A. WILLIS	684

Image resolution and thermal damage of coated films in SEM S. ONO, S. ARAKAWA, Y. HARADA, K. ADACHI and K. KANAYA	686
Electron irradiation damage on a biological sectioned specimen F. NAGATA, T. MATSUDA and K. HAMA	688

COLLAGEN, CARTILAGE, SKIN

The collagen fibrils of amphibian skin by thin sectioning and densitometric methods Y. SHINAGAWA	690
Ultrastructure of native collagen fibrils D. STEVE-BOCCIARELLI	692
Fossil organic material: A unique fibril ultrastructure in Silurian graptolites K. M. TOWE and A. URBANEK	694
Connective tissue in copper-deficient sheep J. C. FANNING and E. G. CLEARY	696
The tidemark of articular cartilage: A scanning electron microscopic study M. L. ZIMNY, I. REDLER and V. C. MOW	698
Metallstaub – diagnostik in Haut– und Lymphknotengewebe mittels rasterelektronenmikroskopie (REM) F. KLASCHKA and L. DUMITRESCU	700
Comparative fine structure of the integument of acarid mite, <i>Caloglyphus mycophagus</i> J. S. KUO and M. E. McCULLY	702
The action of phenol and some vehicles used in cutaneous therapy of the ultrastructure of the rat epidermis C. D. SHOREY, M. S. ROBERTS, R. ARNOLD and R. A. ANDERSON	704

SUPPLEMENTARY PAPERS

Progress in cryo-ultramicrotomy W. BERNHARD	706
The role of multivesicular bodies in cell wall formation D. SCHULZ and H. LEHMANN	708
Artefacts in freeze-etching technique H. LEHMANN and D. SCHULZ	710
Use of freeze-etching technique to demonstrate the ultrastructure of dormant cells D. SCHULZ and H. LEHMANN	712
Electron microscopic observations of the microspheres of <i>Amoeba proteus</i> S. MOOKERJEE, U. MALLIK and A. MOOKERJEE	714
Surface charge and Concanavalin A specific sites labelling of normal and malignant transformed cells Y. MARIKOVSKY, M. INBAR, L. SACHS and D. DANON	716

STRUCTURE OF CYTOPLASMIC 80 S AND MITOCHONDRIAL 60 S
RIBOSOMES FROM LOCUSTA MIGRATORIA

F. Miller, W. Kleinow and W. Neupert

Institut für Zellbiologie und Institut für Physiologische Chemie,
Universität München, Germany

Cytoplasmic (80 S) and mitochondrial (60 S) ribosomes have been isolated from locust flight muscle (Fig. 1A,B). Mitochondrial ribosomes were found to be contaminated by a protein particle which is not disintegrated during lysis of mitochondria with Triton X 100 (1). Purification of mitochondrial ribosomes could be achieved by lysis of mitochondria in 0.055 M MgCl₂. This method results in a partial dissociation of mitochondrial ribosomes (Fig. 1^B).

Unfixed cytoplasmic and mitochondrial ribosome monomers were examined by electron microscopy after negative staining with uranyl acetate. Cytoplasmic ribosomes measure 294 x 245 x 257 Å; mitochondrial ribosomes show dimensions of 271 x 210 x 215 Å. From these values a volume ratio of cytoplasmic : mitochondrial ribosomes of 1,5 : 1 was estimated. Despite their different sedimentation constants mitochondrial ribosomes after negative staining show a morphology similar to cytoplasmic ribosomes. Both types of particles show bipartite profiles which correspond to the frontal and lateral views described by Nonomura et al. (2) for cytoplasmic rat liver ribosomes. In frontal views the small subunit (SS) is visible over its entire length and appears oblong; the large subunit (LS) is roughly triangular with curved sides. In cytoplasmic ribosomes (Fig.2) the subunits are separated partially or completely by a dense band; the SS is partitioned into two parts of unequal size by a faint dense line perpendicular to the dense band; where this line abuts on the horizontal band, a dense spot is found off center, either to the right or to the left side. In mitochondrial ribosomes (Fig.3) the partition of the SS is absent, the horizontal band is not visible over the entire width, but ends also in a dense spot.

The lateral views of cytoplasmic (Fig.2) and mitochondrial (Fig.3) ribosomes are similar; the SS appears roundish and is displaced either to the right or to the left side of the LS. The two enantiomorphic forms occur with equal frequency, but lateral views are rarely found in preparations of mitochondrial ribosomes.

Subunits of mitochondrial ribosomes (40 S and 25 S) were obtained by incubation either at 37°C in a magnesium-free buffer or at 4°C in a buffer containing no magnesium but 0.004 M EDTA prior to fixation in glutaraldehyde (Fig.1 C). Mitochondrial LS (40S) show profiles with one flattened or concave side, where stain sometimes accumulates in a shallow groove, and two convex sides (Fig.4). Roughly circular profiles also occur.

Mitochondrial SS (25 S) display elongated angular profiles. Often the particles are curved with one pointed and one blunted end (Fig.5). A small subunit partition could not be observed.

Our findings show that 60 S ribosomes occur not only in vertebrates (3,4) but also in mitochondria of invertebrates; thus, 60 S ribosomes may be peculiar to mitochondria of metazoa. The small sedimentation constant may be explained either by a small particle weight or by a relative large specific partial volume (5).

References:

1. Kleinow, W., and W. Neupert, 1971. FEBS-Letters 15: 359-364.
2. Nonomura, Y., G. Blobel, and D. Sabatini, 1971. J. Mol. Biol. 60: 303-324.
3. O'Brien, T.W., and G.F. Kalf, 1967. J. Biol. Chem. 242: 2180-2185.
4. Borst, P., 1972. Ann. Rev. Biochem. 41: 333-376.
5. De Vries, H., and R. van der Krogh, 1973. Biochem. Biophys. Res. Comm. 54: 308-314.

Supported by Deutsche Forschungsgemeinschaft, SFB 51

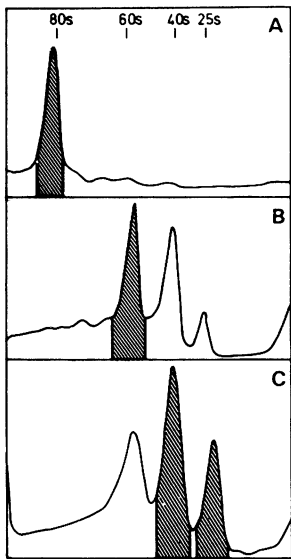


Fig. 1 Gradient profiles (absorbance at 260 nm) of cyto- and mitoribosomes from *Locusta migratoria*. Sucrose gradients were made as described (1) in AMT (0.1 M NH_4Cl , 0.01 M MgCl_2 , 0.03 M Tris-HCl, pH 7.2) or AT (0.1 M NH_4Cl , 0.03 M Tris-HCl, pH 7.2) and centrifuged for 5 hrs at 41 000 rpm in a Spinco SW 41 Ti rotor. The dark areas represent fractions used for electron microscopy.

A) Cytoplasmic monoribosomes (80 S) in AMT.

B) Mitochondrial ribosomes (60 S) in AMT. The ribosomes were prepared by lysis of mitochondria in a medium containing 0.055 M MgCl_2 ; hence, they are partly dissociated.

C) Subunits (40 S and 25 S) of mitoribosomes in AT. The preparation was fixed with glutaraldehyde after incubation under dissociating conditions. Some undissociated ribosomes persist after this treatment.

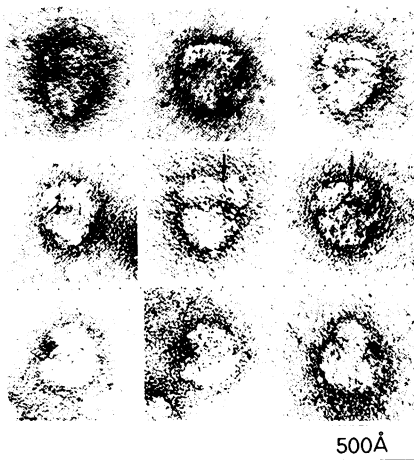


Fig. 2 Cytoplasmic ribosomes. Frontal views (top two rows) and lateral views (bottom row). Arrows mark partition in small subunit.

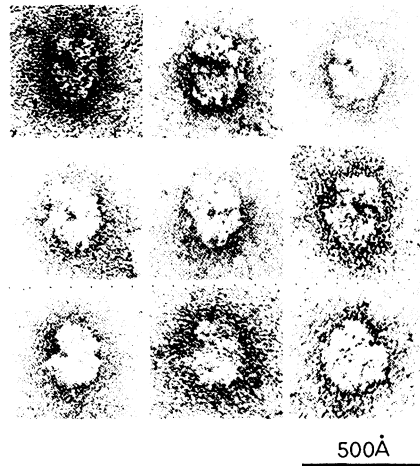


Fig. 3 Mitochondrial ribosomes. Frontal views (top two rows) and lateral views (bottom row).

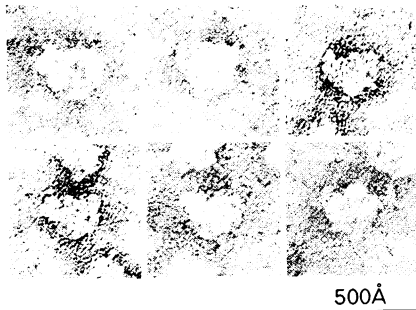


Fig. 4 Large subunits of mitochondrial ribosomes.

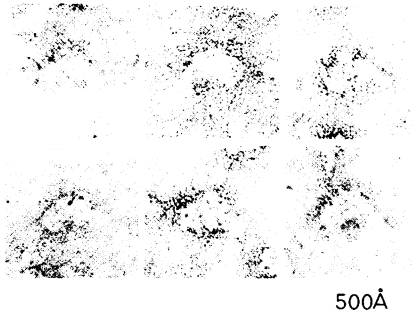


Fig. 5 Small subunits of mitochondrial ribosomes.