

CORRECTION

Open Access

Correction: Severe depression is associated with increased microglial quinolinic acid in subregions of the anterior cingulate gyrus: evidence for an immune-modulated glutamatergic neurotransmission?

Johann Steiner^{1,2*†}, Martin Walter^{1†}, Tomasz Gos^{1,3}, Gilles J Guillemin⁴, Hans-Gert Bernstein¹, Zoltán Sarnyai⁵, Christian Mawrin⁶, Ralf Brisch¹, Hendrik Bielau¹, Louise M zu Schwabedissen¹, Bernhard Bogerts¹ and Aye-Mu Myint^{1,7}

Correction

After publication of the article [1] an error in figure 3 was noticed. The P-values denoted in figure 3a (sACC: $P=0.003$ and aMCC: $P=0.015$) are in fact the results from the second analysis which are denoted correctly in figure 3b (relating to the diagnostic subgroups MDD versus controls). The accurate corresponding values for figure 3a should be sACC: $P=0.006$ and aMCC: $P=0.043$. See Figure 1.

The interpretation of results and the conclusions drawn are not affected as the level of significance is the same (sACC: $P<0.01$ and aMCC: $P<0.05$). Accordingly, the proper summary of results in the abstract and results section is:

"Depressed patients had a significantly increased density of QUIN-positive cells in the sACC ($P=0.006$) and the aMCC ($P=0.043$) compared to controls."

* Correspondence: johann.steiner@med.ovgu.de

†Equal contributors

¹Department of Psychiatry, University of Magdeburg, Magdeburg, Germany

²Pembroke College, University of Cambridge, Cambridge, UK

Full list of author information is available at the end of the article

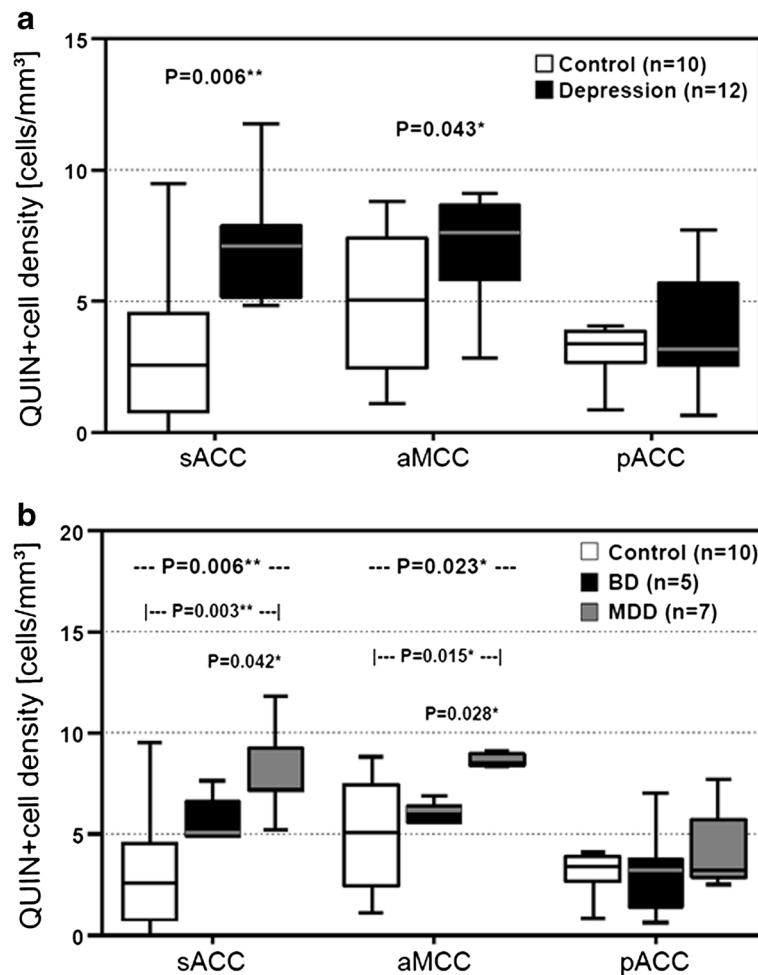


Figure 1 Illustration of QUIN-immunopositive cell densities. **a)** Depressed patients had increased QUIN-immunopositive cell densities in the sACC and the aMCC but not in the pACC. **b)** MDD patients showed the highest QUIN-immunoreactive cell counts in the sACC and the aMCC compared to BD and control cases. No diagnostic subgroup-dependent differences were observed in the pACC. *Annotation:* The box plots show the median, interquartile range, sample minimum and sample maximum, * $P < 0.05$, ** $P < 0.01$.

The authors apologize for this inadvertence and any inconvenience caused.

Author details

¹Department of Psychiatry, University of Magdeburg, Magdeburg, Germany. ²Pembroke College, University of Cambridge, Cambridge, UK. ³Institute of Forensic Medicine, Medical University of Gdańsk, Gdańsk, Poland. ⁴Department of Pharmacology, University of New South Wales, Sydney, Australia. ⁵Department of Pharmacology, University of Cambridge, Cambridge, UK. ⁶Institute of Neuropathology, University of Magdeburg, Magdeburg, Germany. ⁷Department of Psychiatry, University of Munich, Munich, Germany.

Received: 27 February 2013 Accepted: 27 February 2013
 Published: 2 March 2013

References

- Steiner J, Walter M, Gos T, Guillemin GJ, Bernstein HG, Sarnyai Z, Mawrin C, Brisch R, Bielau H, Zu Schwabedissen LM, Bogerts B, Myint AM: **Severe depression is associated with increased microglial quinolinic acid in subregions of the anterior cingulate gyrus: evidence for an immune-modulated glutamatergic neurotransmission?** *J Neuroinflammation* 2011, **8**:94.

doi:10.1186/1742-2094-10-34

Cite this article as: Steiner et al.: Correction: Severe depression is associated with increased microglial quinolinic acid in subregions of the anterior cingulate gyrus: evidence for an immune-modulated glutamatergic neurotransmission?. *Journal of Neuroinflammation* 2013 **10**:34.