

Research

Open Access

Endoplasmic reticulum Ca²⁺-homeostasis is altered in small and non-small cell lung cancer cell lines

Albrecht Bergner*, Julia Kellner, Amanda Tufman and Rudolf M Huber

Address: Division of Respiratory Medicine, Medizinische Klinik-Innenstadt, Ludwig-Maximilians-University, Munich, Germany

Email: Albrecht Bergner* - albrecht.bergner@med.uni-muenchen.de; Julia Kellner - julia.kellner@med.uni-muenchen.de;

Amanda Tufman - amanda.tufman@med.uni-muenchen.de; Rudolf M Huber - huber@med.uni-muenchen.de

* Corresponding author

Published: 24 February 2009

Received: 9 December 2008

Journal of Experimental & Clinical Cancer Research 2009, **28**:25 doi:10.1186/1756-9966-28-25

Accepted: 24 February 2009

This article is available from: <http://www.jeccr.com/content/28/1/25>

© 2009 Bergner et al; licensee BioMed Central Ltd.

This is an Open Access article distributed under the terms of the Creative Commons Attribution License (<http://creativecommons.org/licenses/by/2.0>), which permits unrestricted use, distribution, and reproduction in any medium, provided the original work is properly cited.

Abstract

Background: Knowledge of differences in the cellular physiology of malignant and non-malignant cells is a prerequisite for the development of cancer treatments that effectively kill cancer without damaging normal cells. Calcium is a ubiquitous signal molecule that is involved in the control of proliferation and apoptosis. We aimed to investigate if the endoplasmic reticulum (ER) Ca²⁺-homeostasis is different in lung cancer and normal human bronchial epithelial (NHBE) cells.

Methods: The intracellular Ca²⁺-signaling was investigated using fluorescence microscopy and the expression of Ca²⁺-regulating proteins was assessed using Western Blot analysis.

Results: In a Small Cell Lung Cancer (H1339) and an Adeno Carcinoma Lung Cancer (HCC) cell line but not in a Squamous Cell Lung Cancer (EPLC) and a Large Cell Lung Cancer (LCLC) cell line the ER Ca²⁺-content was reduced compared to NHBE. The reduced Ca²⁺-content correlated with a reduced expression of SERCA 2 pumping calcium into the ER, an increased expression of IP₃R releasing calcium from the ER, and a reduced expression of calreticulin buffering calcium within the ER. Lowering the ER Ca²⁺-content with CPA led to increased proliferation NHBE and lung cancer cells.

Conclusion: The significant differences in Ca²⁺-homeostasis between lung cancer and NHBE cells could represent a new target for cancer treatments.

Background

Lung cancer is the leading cause of cancer death in the industrial nations [1]. Despite recent advances, therapeutic regimens support quality of life but frequently fail to increase long term survival. One of the main reasons for the failure of therapeutic regimens is the fact that cancer cells originate from normal cells and therefore possess similar characteristics. This means that anti-cancer therapies inevitably affect the normal cell population and these side effects often hinder more effective treatments. Thus, knowledge of the differences in the cellular physiology

between malignant and non-malignant cells is crucial for the development of more successful treatments.

Calcium is a ubiquitous signal molecule that is involved in almost all cellular pathways [2,3]. Elevation of the cytoplasmic Ca²⁺-concentration ([Ca²⁺]_c) can result either from Ca²⁺-influx from the extracellular space or from Ca²⁺-release from internal Ca²⁺-stores, primarily the ER. Proteins involved in the Ca²⁺-release from the ER are the inositol-1,4,5-trisphosphate receptor (IP₃R) and the ryanodine receptor (RyR) (Figure 1). Sarco/endoplasmic retic-

ulum Ca^{2+} -ATPases (SERCA) force calcium against the concentration gradient from the cytoplasm into the ER. Within the ER, calcium is buffered by calreticulin [2,3]. Calcium is particularly important for the regulation of proliferation and apoptosis and the imbalance of cell growth and cell death finally leads to cancer. The aim of this study was therefore to evaluate whether the ER Ca^{2+} -homeostasis is altered in lung cancer cell lines compared to normal bronchial epithelium.

Methods

Materials

Cell culture reagents were obtained from Life Technologies (Eggenstein, Germany). Other reagents were bought from Sigma-Aldrich (Deisenhofen, Germany) unless stated otherwise. The human lung carcinoma cell lines H1339 (Small Cell Lung Carcinoma), DMI 53 pI (Small Cell Lung Carcinoma), LCLC-103H (Large Cell Lung Carcinoma), EPLC 272 (Squamous Cell Lung Carcinoma), EPLC M1 (Squamous Cell Lung Carcinoma) and HCC (Adeno-Carcinoma) were purchased from the German Collection of Microorganisms and Cell Cultures (DSMZ, Braunschweig, Germany). Primary normal human bronchial epithelial cells (NHBE) were purchased from Lonza (Walkersville, MD, USA).

Ca^{2+} -imaging

For quantification of changes in the $[\text{Ca}^{2+}]_c$, cells were loaded for 30 min at 37°C with the calcium indicator dye Fluor-4 AM (10 μM , Molecular Probes, Eugene, OR) in

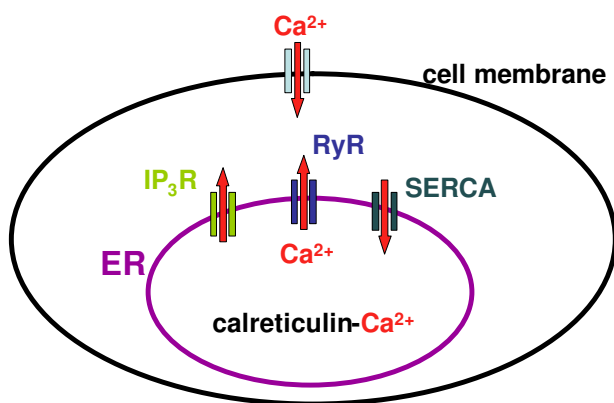


Figure 1
Increase in the cytoplasmic Ca^{2+} -concentration can be due to Ca^{2+} -influx from the extracellular space or due to Ca^{2+} -release from the endoplasmic reticulum (ER). The equilibrium of the ER Ca^{2+} -content is maintained by sarcoplasmic/endoplasmic reticulum Ca^{2+} -ATPases (SERCA) pumping calcium into the ER and inositol-1,4,5-phosphate- (IP_3R) and ryanodine-receptors (RyR) releasing calcium out of the ER. Within the ER, calcium is mainly buffered by calreticulin.

supplemented Hanks Balanced Salt Solution (sHBSS) containing 0.2% Pluronic (Pluronic F-127, Calbiochem, La Jolla, CA). After loading, the cells were incubated for at least 30 min in sHBSS to allow for complete dye deesterification and examined with a fluorescence microscope (Axiovert 200 M, Carl Zeiss, Jena, Germany). Images were recorded in time lapse (1 frame/sec) using a digital CCD camera (AxioCam MRm, Carl Zeiss Vision, Munich, Germany). For each image, regions of interest (ROIs) were defined in single cells, and the average fluorescence intensity of each ROI was measured. Final fluorescence values were expressed as a fluorescence ratio (F/F_0) normalized to the initial fluorescence (F_0). Each analysis was performed using custom written macros in the image analysis software "Scion".

Western Blot analysis

Protein expression was determined by immunoblotting with protein extracts prepared with the Compartmental Protein Extraction Kit according to the manufacturer's instructions (Chemicon International, Hampshire, United Kingdom). EGFR was used as control for plasma membrane contamination, which was found to be low with no differences between cell types. Protein concentrations of the extracts were quantified using the Bradford Protein Assay Kit (Bio-Rad, Munich, Germany). Proteins were separated by SDS polyacrylamide gel electrophoresis (SDS-PAGE) on a 6% separating and 4% stacking gel (for SERCA 2), on a 4% separating and 3% stacking gel (for IP₃R and RyR) and on a 10% separating and 4% stacking gel (for calreticulin) and transferred to nitrocellulose membranes (Hybond ECL Membrane, Amersham Biosciences, UK). After blocking for 2 hours in a 5% solution of non-fat dried milk/TBST (TBS with 0.05% Tween 20), the membranes were incubated overnight at 4°C with specific antibodies (SERCA 2 Abcam 1:1000, Mouse anti-Ryanodine Receptor Chemicon 1:500, Mouse anti-IP3 Receptor Chemicon 1:500, anti-Calreticulin antibody Sigma-Aldrich 1:4000, Beta Actin Antibody (HRP) Loading control Abcam 1:5000, SERCA1 ATPase antibody [VE121G9] Abcam 1:500, SERCA3 ATPase antibody Abcam 1:200). Sheep anti-mouse IgG horseradish peroxidase linked whole antibodies (Amersham Biosciences, UK, 1:1500) were used as secondary antibodies. β -actin served as a loading control. Antibody complexes were visualized using Hyperfilm ECL chemiluminescence (Amersham Biosciences, UK) and evaluated using the "Image-J" analysis software.

Statistics

One-way ANOVA or "ANOVA repeated measurements" (combined with pairwise multiple comparisons) were performed using the "Sigma Stat" software (Jandel Scientific, Chicago, IL). A *P* value of less than 0.05 was considered statistically significant.

Results

To investigate the role of Ca^{2+} -influx in Ca^{2+} -homeostasis in lung cancer cells, NHBE (normal human bronchial epithelial), H1339 (small cell lung carcinoma), HCC (adenocarcinoma), EPLC 272 (squamous cell carcinoma) and LCLC (large cell lung carcinoma) cells were exposed to 1 mM ATP in the presence and the absence of extracellular calcium (PBS containing no calcium but 0.02% EGTA). The resulting increase in the $[\text{Ca}^{2+}]_c$ was quantified using fluorescence microscopy. Baseline fluorescence values were similar in all cell lines (data not shown). In NHBE, H1339 and HCC cells, the ATP-induced Ca^{2+} -increase was comparable with and without external calcium suggesting an insignificant role for Ca^{2+} -influx (Figure 2). In EPLC 272 and LCLC cells, the ATP-induced Ca^{2+} -increase was lower in the absence of extracellular calcium.

Direct measurement of the ER Ca^{2+} -concentration ($[\text{Ca}^{2+}]_{\text{ER}}$) is not reliably feasible. Therefore, we used an indirect approach. SERCA were inhibited using 1 μM

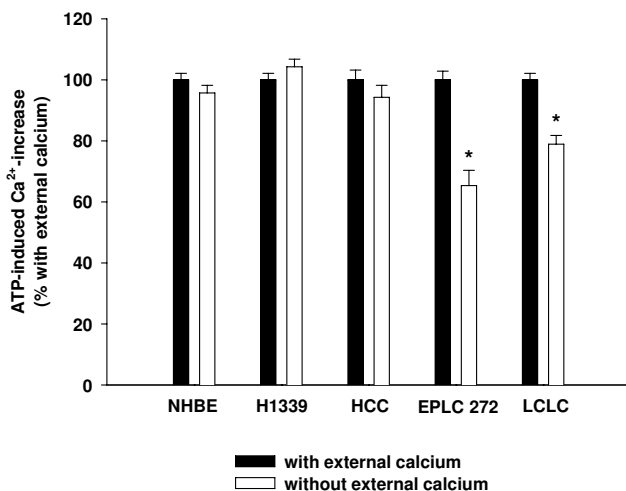


Figure 2
Cells were exposed to 1 mM ATP in the presence and the absence of extracellular calcium. The resulting increase in the cytoplasmic Ca^{2+} -concentration was quantified using fluorescence microscopy. For each cell line, the Ca^{2+} -increase with external calcium was set to 100% (black columns) and the Ca^{2+} -increase without external calcium (white columns) was expressed as percent of the increase with external calcium. In normal bronchial epithelial (NHBE), Small Cell Lung Cancer (H1339) and Adeno-Carcinoma (HCC) cells, the ATP-induced Ca^{2+} -increase was independent of the presence of extracellular calcium suggesting a minor role for Ca^{2+} -influx. In Squamous Cell Lung Carcinoma (EPLC) and Large Cell Lung Carcinoma (LCLC) cells, the ATP-induced Ca^{2+} -increase was lower in the absence of extracellular calcium ($n = 42 - 162$ cells, $* = P < 0.001$ versus "with external calcium").

cyclopiazonic acid (CPA) leading to a net Ca^{2+} -efflux out of the ER. The resulting increase in $[\text{Ca}^{2+}]_c$ was used as an estimate of the $[\text{Ca}^{2+}]_{\text{ER}}$ [4]. In the lung cancer cell lines in which Ca^{2+} -influx contributed to the ATP-induced Ca^{2+} -increase (EPLC 272 and LCLC) the $[\text{Ca}^{2+}]_{\text{ER}}$ was equal to the $[\text{Ca}^{2+}]_{\text{ER}}$ in NHBE (Figure 3A). In those lung cancer cell lines in which the Ca^{2+} -influx did not contribute to the ATP-induced Ca^{2+} -increase (H1339 and HCC) $[\text{Ca}^{2+}]_{\text{ER}}$ was lower than in NHBE. The SCLC line H1339 showed the lowest $[\text{Ca}^{2+}]_{\text{ER}}$ (Figure 3B).

Next, we investigated the expression of the proteins that regulate the $[\text{Ca}^{2+}]_{\text{ER}}$. SERCA pump calcium from the cytoplasm into the ER. Three isoforms of SERCA have been identified so far and, of these, SERCA 2 has been reported to be the most widely expressed [5]. Analyzing the SERCA expression using Western Blot analysis, we found the isoforms SERCA 1 and 3 to be very weakly expressed (data not shown), while SERCA 2 showed strong expression as confirmed by immuno-fluorescence (Figure 4). Comparing the expression of SERCA 2 in NHBE, H1339, and HCC cells, we found lower levels of expression in the lung cancer cells with expression in H1339 cells being the lowest (Figure 5).

Ca^{2+} -release channels of the ER are RyR and IP_3R . In NHBE, H1339, and HCC cells, we found the expression of RyR to be hardly detectable at all (data not shown). In contrast, IP_3R showed substantial expression, which was higher in the lung cancer cell lines, and the highest in H1339 cells (Figure 6).

Within the ER, calcium is buffered by calreticulin. The expression of calreticulin was reduced in H1339 and HCC compared to NHBE cells with the lowest levels of expression being found in HCC cells (Figure 7).

In order to directly investigate the effect of a reduction of the $[\text{Ca}^{2+}]_{\text{ER}}$ on the cell number, we treated the cells with CPA and assessed the cell number after 24 h. In these experiments, we used an additional non-small cell lung cancer cell line (EPLC M1, squamous cell carcinoma) and an additional small cell lung cancer cell line (DMI 53 p1). In both cell lines, the ATP-induced increase in $[\text{Ca}^{2+}]_c$ was independent from Ca^{2+} -influx from the extracellular space (data not shown). Treatment with CPA caused an increase in cell number compared with non-treated controls (Figure 8).

Discussion

In this study, we showed that the contribution of Ca^{2+} -influx from the extracellular space to intracellular Ca^{2+} -homeostasis varied between lung cancer cell lines. However, in those cell lines in which Ca^{2+} -influx played a minor role (H1339 and HCC) the ER Ca^{2+} -content was

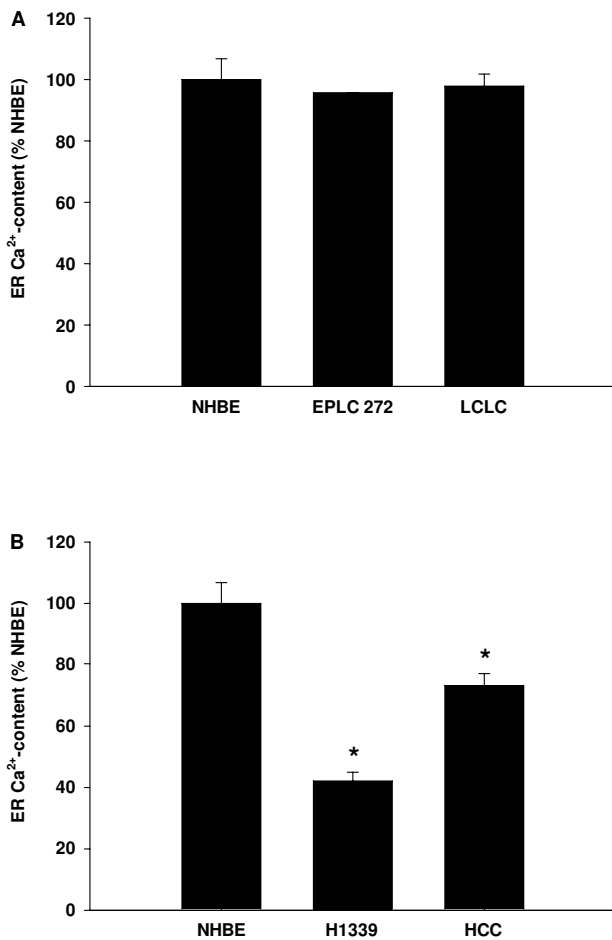


Figure 3
SERCA were inhibited using 1 μ M cyclopiazonic acid leading to a net Ca²⁺-efflux out of the ER. The resulting increase in [Ca²⁺]_c was used as an estimate of the [Ca²⁺]_{ER} and expressed as percentage of NHBE. **(A)** In EPLC and LCLC cells in which Ca²⁺-influx contributed to the ATP-induced Ca²⁺-increase the [Ca²⁺]_{ER} was equal to the [Ca²⁺]_{ER} of NHBE. **(B)** In H1339 and HCC cells in which the Ca²⁺-influx did not contribute to the ATP-induced Ca²⁺-increase the ER Ca²⁺-content was lower than in NHBE cells (n = 50 – 153 cells, * = P < 0.001 versus all other groups).

reduced compared to NHBE cells. The reduced Ca²⁺-content in H1339 and HCC cells correlated with a reduced expression of SERCA 2 pumping calcium into the ER, an increased expression of IP₃R releasing calcium from the ER, and a reduced expression of calreticulin buffering calcium within the ER. Reducing the ER Ca²⁺-content with CPA for 24 h led to an increased cell number.

The origin of the various lung carcinomas is still controversially being discussed. While squamous cell lung carcinomas are believed to origin from metaplastic bronchial

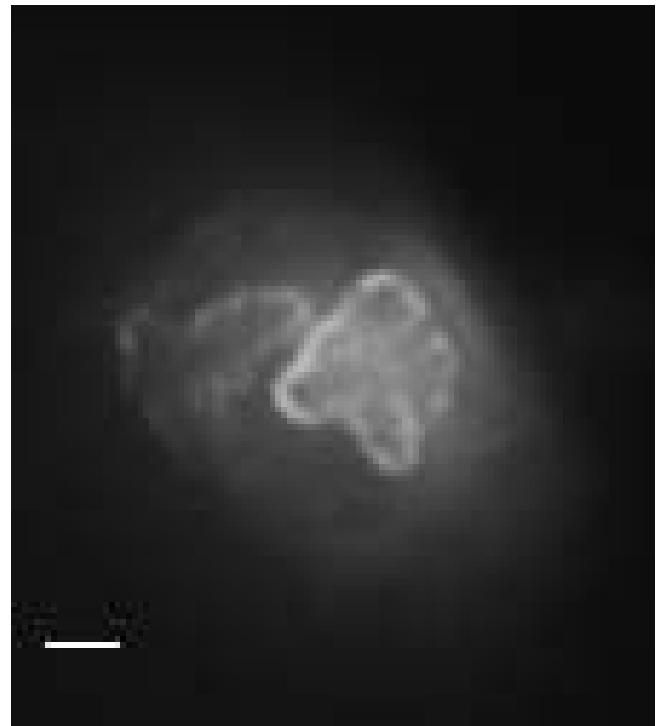


Figure 4
Immunohistochemical staining of SERCA 2 in a H1339 cell. Note the ER-typical pattern of the staining as SERCA is an ER-trans-membrane protein. Bar = 2 μ m.

epithelium, many authors believe small cell lung carcinomas to origin from neuro-epithelial bodies. But, the origin of large cell carcinomas and adeno carcinomas is less clear. However, being forced to choose a "normal" tissue to compare the malignant cell lines with, we decided to use normal human bronchial epithelial cells as a reference knowing that this choice constitutes a compromise.

SERCA is an ER transmembrane protein, consisting of a single polypeptide chain folded into four major domains, and is encoded by the genes ATP2A1-3 [5]. So far, 3 isoforms have been identified. As SERCA serves to maintain the concentration gradient between the cytoplasm and the ER by pumping calcium into the ER, SERCA has been regarded as a potential mediator of alterations of the ER Ca²⁺-content. In heart failure, the ER Ca²⁺-content of cardiac myocytes has been found to be reduced due to altered expression of SERCA [6]. In our laboratory, bronchial hyperreactivity in an asthma model was correlated with increased Ca²⁺-content in the sarcoplasmic reticulum of airway smooth muscle cells [4]. Further, in an interleukin based asthma model, the increased Ca²⁺-content was at least partially caused by increased expression of SERCA [7]. Several studies investigated the expression of SERCA in normal and tumor tissue reporting downregulation of

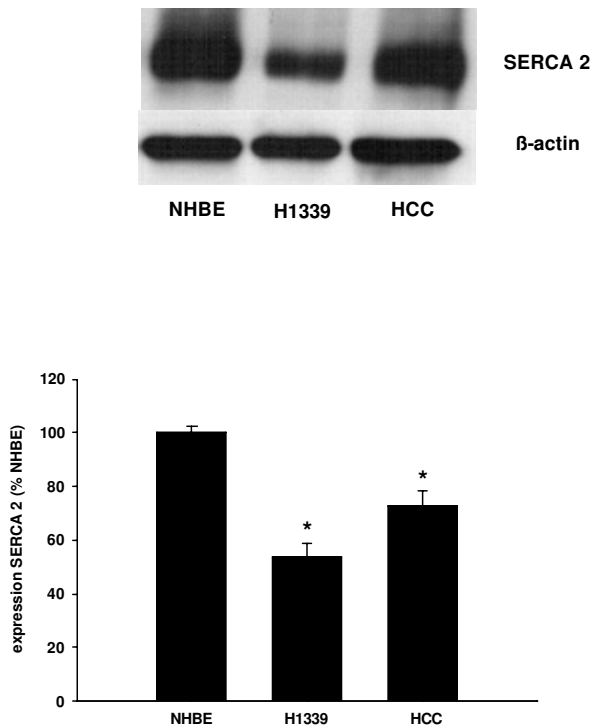


Figure 5
The expression of SERCA 2 was analyzed in NHBE, H1339, and HCC cells using Western Blot analysis and expressed as percentage of the SERCA 2 expression in NHBE cells. In H1339 and HCC cells, the expression of SERCA 2 was found to be reduced with H1339 showing the weakest expression ($n = 3$, $* = P < 0.01$ versus all other groups).

this ATPase in cancer [8-11]. But, in colorectal cancer, Chung et al. reported that SERCA 2 mRNA was increased compared to normal tissue [12]. Moreover, increased SERCA 2 protein levels were correlated with serosal invasion, lymph node metastasis, advanced tumor stage and poorer survival-rate. Hence, an altered Ca^{2+} -content of the ER might not only be involved in the early steps of carcinogenesis but may also cause further malignant transformation towards an invasive and aggressive phenotype.

Investigating the correlation of SERCA expression, $[\text{Ca}^{2+}]_{\text{ER}}$ and proliferation, Legrand et al. showed that in prostate cancer cells an increased growth rate was correlated with higher $[\text{Ca}^{2+}]_{\text{ER}}$ and increased SERCA 2 expression [13]. A decreased growth rate was correlated with decreased $[\text{Ca}^{2+}]_{\text{ER}}$ and decreased expression of SERCA 2b. Neuroendocrine differentiation of prostate cancer cells is considered to mark increased aggressiveness of cancer growth. Vanverbergh et al. showed that neuroendocrine differentiation in these cells was associated with apoptosis

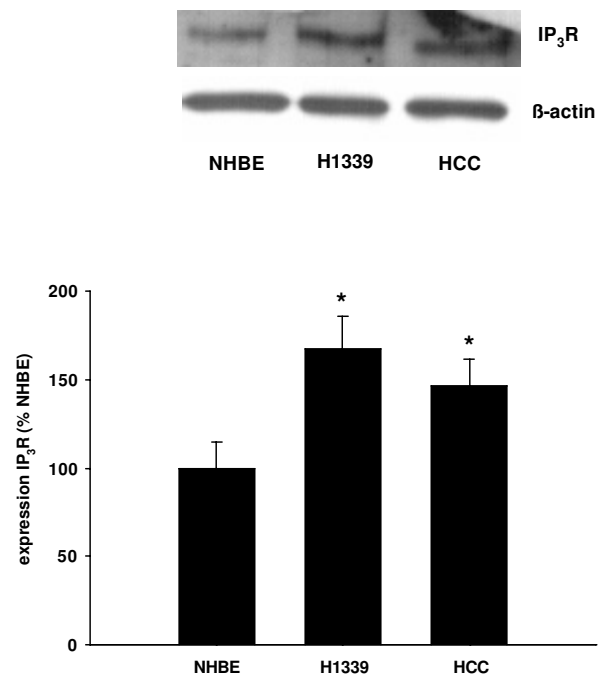


Figure 6
The expression of IP₃R was analyzed in NHBE, H1339, and HCC cells using Western Blot analysis and expressed as percentage of the IP₃R expression in NHBE cells. In H1339 and HCC cells, the expression of IP₃R was increased with H1339 showing the highest expression ($n = 4$, $* = P < 0.01$ versus all other groups).

resistance probably due to decreased filling of the ER Ca^{2+} -store caused by under-expression of SERCA 2 and calreticulin [14]. But, Crepin et al. reported that prolactin stimulated proliferation in immortalized prostate cells through increased $[\text{Ca}^{2+}]_{\text{ER}}$ due to increased SERCA 2 expression [15]. In a comprehensive review, Lipskaia proposed that proliferation is associated with a sustained increase in $[\text{Ca}^{2+}]_{\text{c}}$ or sustained Ca^{2+} -oscillations, decreased refilling of the ER because of SERCA inhibition, and enhanced store operated Ca^{2+} -entry from the extracellular space [16]. Apparently, the relationship between $[\text{Ca}^{2+}]_{\text{ER}}$, SERCA expression and tumor growth varies between studies, cell types and differentiation status. However, an altered ER Ca^{2+} -homeostasis is obviously involved in malignant transformation. To our knowledge, this is the first report showing an altered ER Ca^{2+} -homeostasis in lung cancer cells.

The IP₃R is a Ca^{2+} -channel composed of 4 subunits, which releases calcium upon the binding of IP₃ [17]. Sakakura and colleagues showed that the IP₃R was overexpressed in a gastric cancer cell line established from peritoneal dissemination, but weakly expressed in a gastric cancer cell

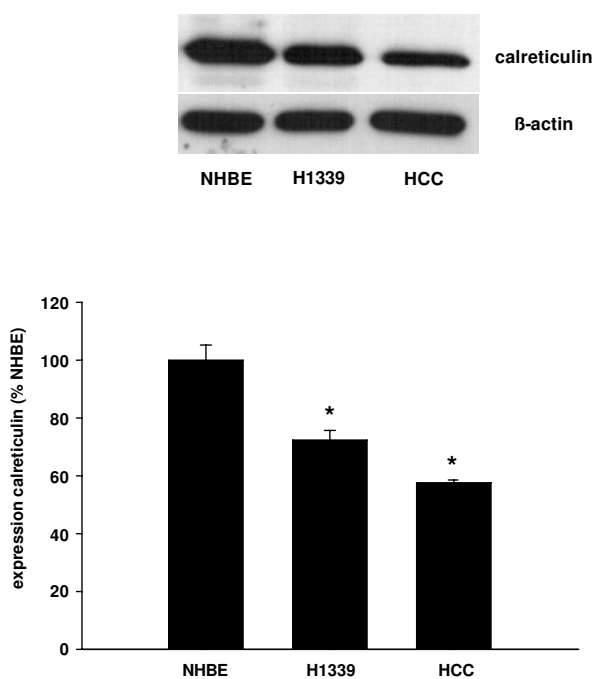


Figure 7
The expression of calreticulin was analyzed in NHBE, H1339, and HCC cells using Western Blot analysis and expressed as percentage of the calreticulin expression in NHBE cells. In H1339 and HCC cells, the expression of calreticulin was reduced with HCC cells showing the weakest expression ($n = 3$, $* = P < 0.01$ versus all other groups).

line established from a primary tumor as well as in normal gastric epithelial cells [18]. The authors therefore suggest a role for the IP_3R in the transition to a metastatic phenotype. Our finding of increased IP_3R expression in H1339 and HCC cells is in agreement with *in vivo* data obtained from patients with resectable NSCLC, where Heighway et al. found amplification of the IP_3R gene in the tumor tissue compared to normal tissue [19].

Calreticulin is a 46-kDa chaperone that binds calcium in the lumen of the ER with high capacity [20]. It also participates in the folding of newly synthesized proteins. Recently, a role for calreticulin in immunogenic cell death has been proposed [21]. The authors reported that anthracyclines and γ -irradiation induced translocation of calreticulin to the plasma membrane thereby stimulating immunogenic cell death. In this context, our finding of reduced calreticulin expression in lung cancer cells could be of particular importance.

A decreased $[Ca^{2+}]_{ER}$ is regarded as a pathophysiological mechanism in heart failure [6]. Istaroxime is a SERCA acti-

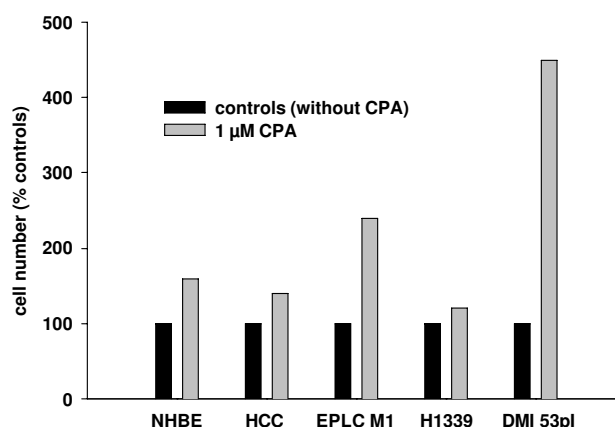


Figure 8
Cells were treated with 1 μ M CPA for 24 h to inhibit SERCA. The cell number was assessed after 24 h and expressed as percent of the non-treated controls. In NHBE cells, non-small cell lung cancer cells (HCC and EPLC M1), and small cell lung cancer cells (H1339 and DMI 53 pl) the cell number was higher after CPA treatment.

vator that has been successfully tested in a clinical phase 1-2 trial and found to be well tolerated and to improve cardiac function [22]. As substances altering the intracellular Ca^{2+} -homeostasis become available for clinical use, the altered Ca^{2+} -homeostasis of cancer cells may become a valuable target to improve therapeutic options in lung cancer.

Conclusion

In our study, we showed that in H1339 and HCC cells the ER Ca^{2+} -content was reduced compared to NHBE cells. The reduced Ca^{2+} -content correlated with a reduced expression of SERCA 2 pumping calcium into the ER, an increased expression of IP_3R releasing calcium from the ER, and a reduced expression of calreticulin buffering calcium within the ER. The differences in the intracellular Ca^{2+} -homeostasis between lung cancer and normal bronchial epithelial cells may lay the basis for new diagnostic or therapeutical approaches.

Competing interests

The authors declare that they have no competing interests.

Authors' contributions

AB conceived the study, carried out experiments on the Ca^{2+} -signaling and drafted the manuscript. JK carried out experiments on the Ca^{2+} -signaling and Western Blot analysis. AT and RMH participated in the study design and revised the manuscript critically for important intellectual content.

Acknowledgements

Supported by the Deutsche Forschungsgemeinschaft Grant BE 2356/2-3 and a Deutsche Gesellschaft für Pneumologie und Beatmungsmedizin Grant to A. Bergner.

References

- Alberg AJ, Ford JG, Samet JM: **Epidemiology of lung cancer: ACCP evidence-based clinical practice guidelines (2nd edition)**. *Chest* 2007, **132**:29S-55S.
- Berridge MJ, Bootman MD, Roderick HL: **Calcium signalling: dynamics, homeostasis and remodelling**. *Nat Rev Mol Cell Biol* 2003, **4**:517-29.
- Clapham DE: **Calcium signaling**. *Cell* 2007, **131**:1047-58.
- Bergner A, Kellner J, Silva AK, Gamarra F, Huber RM: **Ca²⁺-signaling in airway smooth muscle cells is altered in T-bet knockout mice**. *Respir Res* 2006, **7**:33.
- Wuytack F, Raeymaekers L, Missiaen L: **Molecular physiology of the SERCA and SPCA pumps**. *Cell Calcium* 2002, **32**:279-305.
- Yano M, Ikeda Y, Matsuzaki M: **Altered intracellular Ca²⁺ handling in heart failure**. *J Clin Invest* 2005, **115**:556-64.
- Kellner J, Tantzsch J, Oelmez H, Edelmann M, Fischer R, Huber RM, Bergner A: **Mechanisms Altering Airway Smooth Muscle Cell Ca Homeostasis in Two Asthma Models**. *Respiration* 2008, **76**:205-15.
- Korosec B, Glavac D, Rott T, Ravnik-Glavac M: **Alterations in the ATP2A2 gene in correlation with colon and lung cancer**. *Cancer Genet Cytogenet* 2006, **171**:105-11.
- Endo Y, Uzawa K, Mochida Y, Shiiba M, Bukawa H, Yokoe H, Tanzawa H: **Sarcoendoplasmic reticulum Ca(2+) ATPase type 2 down-regulated in human oral squamous cell carcinoma**. *Int J Cancer* 2004, **110**:225-31.
- Pacifico F, Ulianich L, De Micheli S, Treglia S, Leonardi A, Vito P, Formisano S, Consiglio E, Di Jeso B: **The expression of the sarco/endoplasmic reticulum Ca²⁺-ATPases in thyroid and its down-regulation following neoplastic transformation**. *J Mol Endocrinol* 2003, **30**:399-409.
- Brouland JP, Gelebart P, Kovacs T, Enouf J, Grossmann J, Papp B: **The loss of sarco/endoplasmic reticulum calcium transport ATPase 3 expression is an early event during the multistep process of colon carcinogenesis**. *Am J Pathol* 2005, **167**:233-42.
- Chung FY, Lin SR, Lu CY, Yeh CS, Chen FM, Hsieh JS, Huang TJ, Wang JY: **Sarco/endoplasmic reticulum calcium-ATPase 2 expression as a tumor marker in colorectal cancer**. *Am J Surg Pathol* 2006, **30**:969-74.
- Legrand G, Humez S, Slomianny C, Dewailly E, Abeele F, Vanden Mariot P, Wuytack F, Prevarskaya N: **Ca²⁺ pools and cell growth. Evidence for sarcoendoplasmic Ca²⁺-ATPases 2B involvement in human prostate cancer cell growth control**. *J Biol Chem* 2001, **276**:47608-14.
- Vanoverberghe K, Abeele F, Vanden Mariot P, Lepage G, Roudbaraki M, Bonnal JL, Mauroy B, Shuba Y, Skryma R, Prevarskaya N: **Ca²⁺ homeostasis and apoptotic resistance of neuroendocrine-differentiated prostate cancer cells**. *Cell Death Differ* 2004, **11**:321-30.
- Crepin A, Bidaux G, Abeele F, Vanden Dewailly E, Goffin V, Prevarskaya N, Slomianny C: **Prolactin stimulates prostate cell proliferation by increasing endoplasmic reticulum content due to SERCA 2b over-expression**. *Biochem J* 2007, **401**:49-55.
- Lipskaia L, Hulot JS, Lompre AM: **Role of sarco/endoplasmic reticulum calcium content and calcium ATPase activity in the control of cell growth and proliferation**. *Pflugers Arch* 2009, **457**(3):673-85.
- Bezprozvanny I: **The inositol 1,4,5-trisphosphate receptors**. *Cell Calcium* 2005, **38**:261-72.
- Sakakura C, Hagiwara A, Fukuda K, Shimomura K, Takagi T, Kin S, Nakase Y, Fujiyama J, Mikoshiba K, Okazaki Y, Yamagishi H: **Possible involvement of inositol 1,4,5-trisphosphate receptor type 3 (IP3R3) in the peritoneal dissemination of gastric cancers**. *Anticancer Res* 2003, **23**:3691-7.
- Heighway J, Betticher DC, Hoban PR, Altermatt HJ, Cowen R: **Coamplification in tumors of KRAS2, type 2 inositol 1,4,5 triphosphate receptor gene, and a novel human gene, KRAG**. *Genomics* 1996, **35**:207-14.
- Gelebart P, Opas M, Michalak M: **Calreticulin, a Ca²⁺-binding chaperone of the endoplasmic reticulum**. *Int J Biochem Cell Biol* 2005, **37**:260-6.
- Obeid M, Tesniere A, Panaretakis T, Tufi R, Joza N, van Endert P, Ghiringhelli F, Apetoh L, Chaput N, Flament C, Ullrich E, de Botton S, Zitvogel L, Kroemer G: **Ecto-calreticulin in immunogenic chemotherapy**. *Immunol Rev* 2007, **220**:22-34.
- Ghali JK, Smith WB, Torre-Amione G, Haynos W, Rayburn BK, Amato A, Zhang D, Cowart D, Valentini G, Carminati P, Gheorghide M: **A phase 1-2 dose-escalating study evaluating the safety and tolerability of istaroxime and specific effects on electrocardiographic and hemodynamic parameters in patients with chronic heart failure with reduced systolic function**. *Am J Cardiol* 2007, **99**:47A-56A.

Publish with **BioMed Central** and every scientist can read your work free of charge

"BioMed Central will be the most significant development for disseminating the results of biomedical research in our lifetime."

Sir Paul Nurse, Cancer Research UK

Your research papers will be:

- available free of charge to the entire biomedical community
- peer reviewed and published immediately upon acceptance
- cited in PubMed and archived on PubMed Central
- yours — you keep the copyright

Submit your manuscript here:
http://www.biomedcentral.com/info/publishing_adv.asp

