



**Cite this article:** Langer MC, Rincón AD, Ramezani J, Solórzano A, Rauhut OWM. 2014 New dinosaur (Theropoda, *stem*-Averostra) from the earliest Jurassic of the La Quinta formation, Venezuelan Andes. *R. Soc. open sci.* 1: 140184. <http://dx.doi.org/10.1098/rsos.140184>

Received: 16 July 2014

Accepted: 10 September 2014

**Subject Areas:**

palaeontology

**Keywords:**

Averostra, Dinosauria, Early Jurassic, U–Pb geochronology

**Author for correspondence:**

Max C. Langer

e-mail: [mclanger@ffclrp.usp.br](mailto:mclanger@ffclrp.usp.br)

Electronic supplementary material is available at <http://dx.doi.org/10.1098/rsos.140184> or via <http://rsos.royalsocietypublishing.org>.

# New dinosaur (Theropoda, *stem*-Averostra) from the earliest Jurassic of the La Quinta formation, Venezuelan Andes

Max C. Langer<sup>1</sup>, Ascanio D. Rincón<sup>2</sup>,  
Jahandar Ramezani<sup>3</sup>, Andrés Solórzano<sup>2</sup>  
and Oliver W. M. Rauhut<sup>4</sup>

<sup>1</sup>Laboratório de Paleontologia de Ribeirão Preto, FFCLRP, Universidade de São Paulo, Avenida Bandeirantes 3900, 14040-901, Ribeirão Preto-SP, Brazil

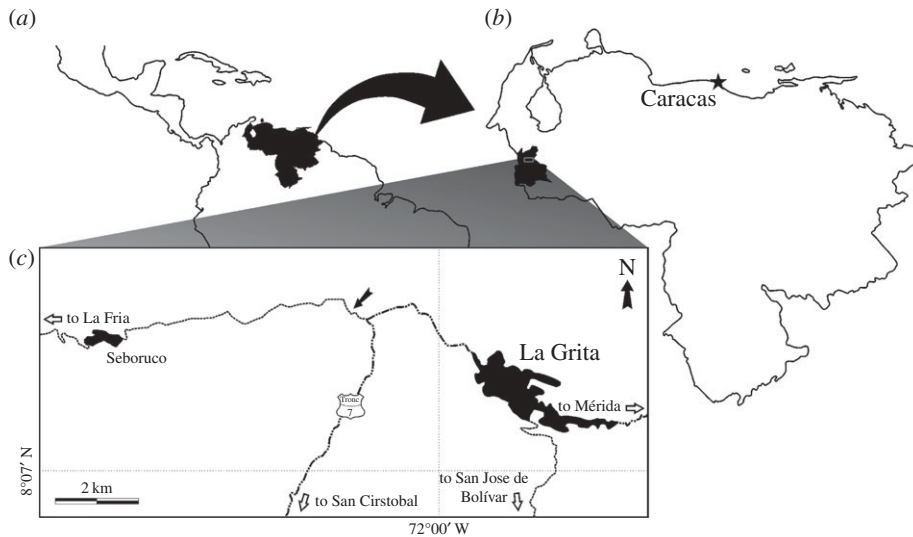
<sup>2</sup>Laboratorio de Paleontología, Centro de Ecología, Instituto Venezolano de Investigaciones Científicas (IVIC), Carretera Panamericana Km 11, 1020-A Caracas, Venezuela

<sup>3</sup>Department of Earth, Atmospheric and Planetary Sciences, Massachusetts Institute of Technology, 77 Massachusetts Avenue, Cambridge, MA, USA

<sup>4</sup>SNSB, Bayerische Staatssammlung für Paläontologie und Geologie and Department of Earth and Environmental Sciences, Ludwig-Maximilians-University, Richard-Wagner-Strasse 10, Munich, Germany

## 1. Summary

Dinosaur skeletal remains are almost unknown from northern South America. One of the few exceptions comes from a small outcrop in the northernmost extension of the Andes, along the western border of Venezuela, where strata of the La Quinta Formation have yielded the ornithischian *Laquintasaura venezuelae* and other dinosaur remains. Here, we report isolated bones (ischium and tibia) of a small new theropod, *Tachiraptor admirabilis* gen. et sp. nov., which differs from all previously known members of the group by a unique suite of features of its tibial articulations. Comparative/phylogenetic studies place the new form as the sister taxon to Averostra, a theropod group that is known primarily from the Middle Jurassic onwards. A new U–Pb zircon date (isotope dilution thermal-ionization mass spectrometry; ID-TIMS method) from the bone bed matrix suggests an earliest Jurassic maximum age for the La Quinta Formation. A dispersal–vicariance analysis suggests that such a stratigraphic gap is more likely to be filled by new records from north and central Pangaea than from southern areas. Indeed, our data show that the sampled summer-wet equatorial belt, which yielded the new taxon, played a pivotal role in theropod evolution across the Triassic–Jurassic boundary.



**Figure 1.** Maps of (a) Venezuela within northern South and Central America, (b) Táchira State within Venezuela and (c) La Grita area indicating the location of the type locality of *Tachiraptor admirabilis* (black arrow). Dash-dotted lines denote main roads; thin dotted lines, paved secondary roads.

## 2. Introduction

Averostra, the major-group of theropod dinosaurs that includes Tetanurae and Ceratosauria [1,2] is well known from the Middle Jurassic onwards [3,4], but closely related forms have been recovered from various Late Triassic–Early Jurassic deposits around the world [5–10]. Many of these taxa have controversial phylogenetic positions [4,11,12], with contested referrals to Coelophysoidea [1] or to the ‘*Dilophosaurus* clade’ [9], hampering the identification of averostran diagnostic traits, as well as the inference of their ancestral biogeographic range. However, the latter challenge may be overcome by the discovery of new fossils, especially from poorly sampled areas.

Dinosaur skeletal remains are almost unknown in some Gondwanan areas, such as the northern part of South America [13]. The latter has yielded mostly fragmentary remains from Brazil, Colombia and Venezuela [14–16]. The best known of these are found in a single, relatively small outcrop of the La Quinta Formation (figure 1) in the area of the Mérida Mountains, the northernmost extension of the Andes, at the western border of Venezuela. Its interbedded tuff and siltstone intervals have yielded fish remains, isolated teeth of a carnivorous archosaur, and isolated bones and teeth of the small ornithischian *Laquintasaura venezuelae* [17–20].

The La Quinta Formation consists mainly of continental red beds and volcanic rocks deposited in an extensional tectonic setting associated with the Mesozoic breakup of Pangaea and opening of the Atlantic Ocean [21–24]. In its type locality, near the town of La Grita, the La Quinta Formation is over 1600 m thick and exceptionally tuffaceous. It lies unconformably atop the low-grade metamorphic rocks of the Mucuchachi Formation of middle Carboniferous to Permian age, and is covered, via a disconformity or transitional interval, by the Lower Cretaceous Rio Negro Formation [25]. The type-section can be divided into three distinct intervals [25], the middle of which comprises 840 m of tuffs, interbedded with siltstones, sandstones and local layers of limestone. Its depositional environment has been interpreted as an alluvial plain, under a seasonally arid and humid tropical climate [25]. Sedimentation was predominantly fluvial, locally lacustrine, disrupted by widespread pyroclastic input. The mafic lavas and shallow intrusions that characterize the La Quinta Formation in other areas (e.g. Sierra de Perijá [21]) are absent from the type locality.

The age of the La Quinta Formation has been debated in the literature [20]. In the type area (Mérida Andes), siltstones, shales and limestones of the middle interval contain plant remains, ostracods, conchostracans, palynomorphs and fish teeth, most of which are poorly preserved. The fossil plants suggest an age ranging from Early Jurassic to Early Cretaceous [26]; whereas palynomorphs indicate an older Late Triassic to Middle-Late Jurassic age [25]. In addition, the record of a dinosaur ilium with a not fully perforated acetabulum suggests a Late Triassic to Early Jurassic age [19,20]. In the Perijá Andes, the palaeobotanical association of the La Quinta Formation suggests a Middle Jurassic age [26,27], and

abundant estherid conchostracans range in age from Late Triassic/Early Jurassic, in the lower part of the unit, to Late Jurassic/Early Cretaceous, in its upper part [21].

Past geochronological studies of the La Quinta Formation have produced equivocal results. A U–Pb zircon date (bulk multi-grain zircon analyses) of  $229 \pm 15$  Ma from the La Grita dacitic tuff at the base of the La Quinta Formation in the Mérida Andes [28], suggested a Late Triassic episode of volcanic activity. Biotite and whole-rock K–Ar dates reported from the basal tuff were, however, much younger at  $149 \pm 10$  Ma and  $122.5 \pm 7.7$  Ma, respectively [25,29], probably owing to thermal perturbation of the K–Ar system at a younger date. Reported U–Pb, Rb–Sr and K–Ar dates from volcanic rocks of the La Quinta Formation in the Perijá Andes [21] range from Middle to Late Jurassic (approx. 170–140 Myr ago). Together, the radioisotopic dates and scant fossil evidence suggest that the deposition of the La Quinta Formation started in the Late Triassic.

During the last few years, several field investigations have been conducted around the type-section of the La Quinta Formation, allowing the collection of new dinosaur material. Here, two theropod bones (tibia and ischium) are reported. They represent a new member of that clade, increasing the depauperate dinosaur record of northern South America. Furthermore, new U–Pb zircon geochronology (chemical abrasion thermal-ionization mass spectrometry; CA-TIMS method) from the fossil-bearing, tuffaceous bed provides more robust constraints on the age of the La Quinta Formation and its important biota.

### 3. U–Pb geochronology

#### 3.1. Sample and methods

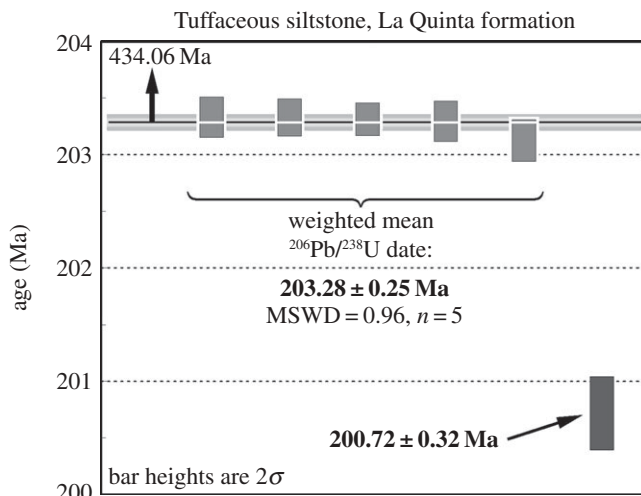
Zircons were separated from a sample of relatively uniform, grey, tuffaceous siltstone that enclosed the theropod fossils by standard heavy mineral separation techniques using high-density liquids. Seven single zircons were selected based on grain morphology and analysed by the U–Pb isotope dilution thermal-ionization mass spectrometry (ID-TIMS) technique following the procedures described in [30]. All zircons were pre-treated by a CA-TIMS method modified after [31] to mitigate the effects of radiation-induced Pb loss, and spiked with the EARTHTIME ET535 mixed  $^{205}\text{Pb}$ – $^{233}\text{U}$ – $^{235}\text{U}$  tracer prior to dissolution and analysis. Data reduction including date calculation and propagation of uncertainties was carried out using computer applications and algorithms of [32,33]. Complete U–Pb data appear in the electronic supplementary material, table S1.

In the case of tuffaceous (volcaniclastic) sedimentary deposits, sample date is calculated based on the weighted mean  $^{206}\text{Pb}/^{238}\text{U}$  date of a coherent cluster of the youngest zircon analyses from the sample and is interpreted as the maximum age of deposition. Uncertainties are reported at 95% confidence level and follow the notation  $\pm X/Y/Z$  Ma, where  $X$  is the internal (analytical) uncertainty in the absence of all external errors,  $Y$  incorporates the U–Pb tracer calibration error and  $Z$  includes the latter as well as the decay constant errors of [34]. Complete uncertainties ( $Z$ ) are necessary for comparison between age data from different isotopic chronometers (e.g. U–Pb versus  $^{40}\text{Ar}/^{39}\text{Ar}$ ).

#### 3.2. Results and age constraints

Selected zircons for analysis (see the electronic supplementary material, figure S1) were sharply faceted prisms with visible glass (melt) inclusions along their ‘ $c$ ’ axes and with no detectable evidence of abrasion or rounding. Five of the analysed zircons form a coherent cluster with a weighted mean  $^{206}\text{Pb}/^{238}\text{U}$  date of  $203.281 \pm 0.075/0.12/0.25$  Ma and a mean square of weighted deviates (MSWDs) of 0.96 (figure 2). One significantly older outlier ( $z6$ ) at *ca* 434 Ma is interpreted as detrital, whereas another analysis ( $z5$ ) at  $200.72 \pm 0.32/0.34/0.40$  Ma is younger outside the uncertainty from the main cluster. The latter could be the result of persistent Pb loss or possibly reflect a younger, underrepresented, population of zircons (see below).

A parallel U–Pb geochronologic (CA-TIMS) study of the La Quinta Formation bone bed near La Grita [20] has identified a spectrum of zircon dates, though with higher uncertainties, fairly comparable to those reported here (see the electronic supplementary material, figure S1). These include a main population of analyses clustered around *ca* 203.48 Ma, as well as two distinguishably younger zircons at  $200.98 \pm 0.62$  Ma and  $200.6 \pm 1.4$  Ma ( $2\sigma$  errors [20]). The latter two overlap within uncertainty with our single youngest zircon analysis, providing further evidence in support of a younger zircon population



**Figure 2.** Date distribution plot of analysed zircons of this study. Bar heights are proportional to  $2\sigma$  analytical uncertainty of individual analyses; solid bars are analyses used in age calculation. Horizontal lines signify calculated sample dates and the width of the shaded band represents internal uncertainty in weighted mean at a 95% confidence level. Arrow points to additional analysis plotting outside the diagram. Reported date incorporates external sources of uncertainty. See the electronic supplementary material, table S1 for complete analytical data and text for details of date uncertainties.

present in the sample. Our measured date of  $200.72 \pm 0.32$  Ma thus represents a closer estimate for the maximum age of deposition of the fossil-bearing bed than the above calculated weighed mean date.

The most recent calibration of the terminal Triassic timescale based on U–Pb geochronology of ammonite-bearing marine strata of the Pucara Basin in northern Peru places the Norian–Rhaetian and the Rhaetian–Hettangian (Triassic–Jurassic) boundaries at  $205.50 \pm 0.35$  Ma and  $201.36 \pm 0.17$  Ma, respectively [35]. Accordingly, the fossiliferous bed of the La Quinta Formation with an estimated age equal to, or younger than  $200.72 \pm 0.32$  Ma could have been deposited as early as 150 kyr after the start of the Jurassic. Since our U–Pb age constraint for the bed is only a maximum estimate (see above), it is possible that the true depositional age of the bed is appreciably younger than our measured date. The magnitude of this possible age bias cannot be reliably quantified unless additional, closely spaced, tuffaceous samples from the same stratigraphic section are dated [30].

## 4. Systematic palaeontology

Theropoda Marsh 1881 *sensu* [36]

Neotheropoda Bakker 1986 *sensu* [37]

*stem-Averostra* Paul 2002 *sensu* [1]

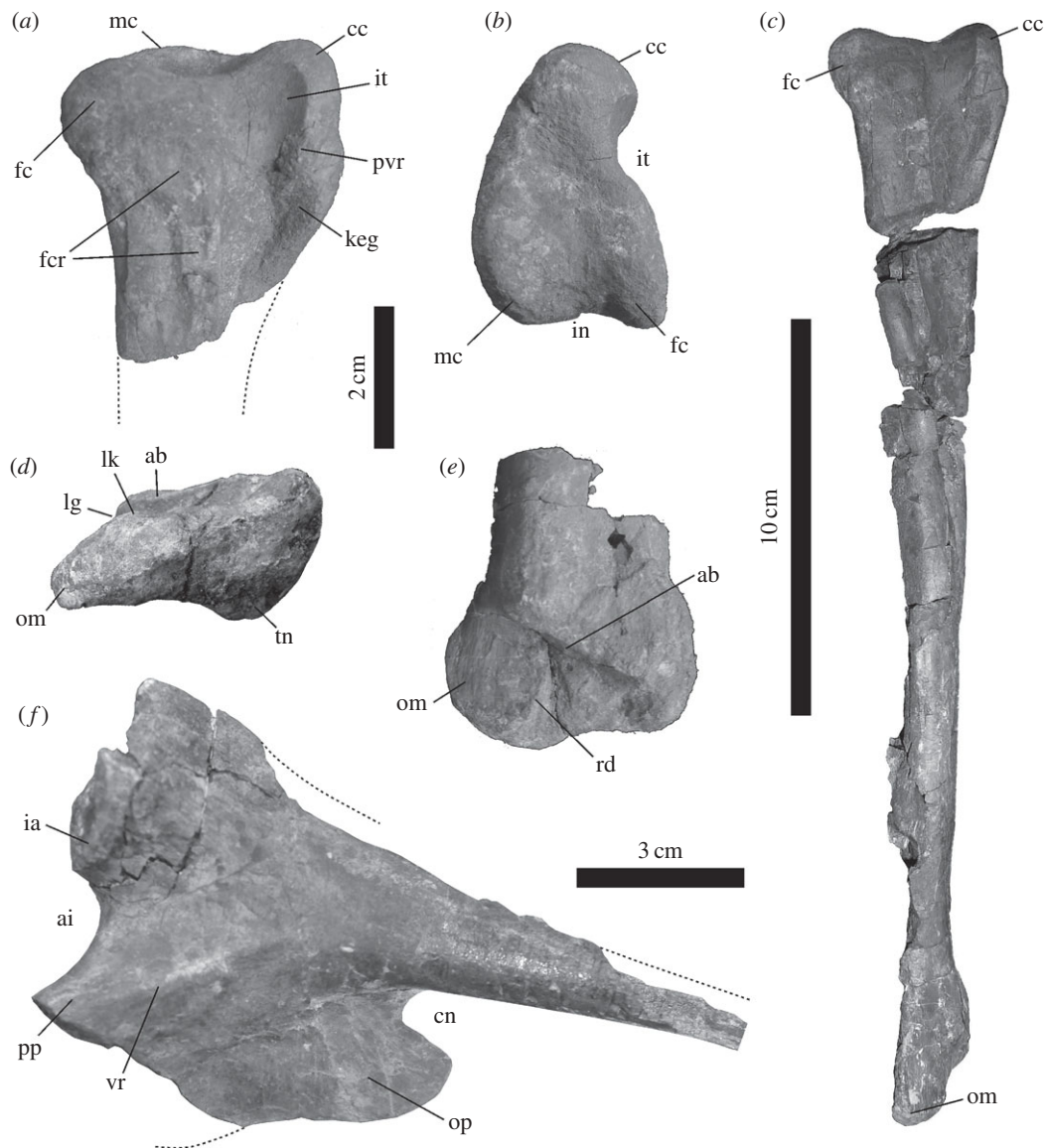
*Tachiraptor admirabilis* new genus and species

### 4.1. Etymology

The generic name derives from Táchira, the Venezuelan state where the fossil was found, and raptor (Latin for thief), in reference to the probable predatory habits of the animal. The specific epithet honours Simon Bolívar's 'Admirable Campaign', in which La Grita, the town where the type locality is located, played a strategic role.

### 4.2. Holotype and referred material

Holotype: IVIC-P-2867 (see institutional abbreviations in the electronic supplementary material): nearly complete right tibia (figure 3*a–e*). Referred material: IVIC-P-2868: proximal left ischium (figure 3*f*) found in the same spot as the type-material.



**Figure 3.** *Tachiraptor admirabilis* gen et sp. nov. Holotype right tibia (IVIC-P-2867) in (a) lateral (proximal portion), (b) proximal, (c) lateral, (d) distal and (e) cranial (distal portion) views. Referred left ischium (IVIC-P-2868) in (f) lateral view. Abbreviations: ab, astragalar buttress; cc, cnemial crest; ai, cranial emargination; cn, caudal notch; fc, fibular condyle; fcr, fibular crest; ia, iliac articulation; in, intercondylar notch; it, incisura tibialis; keg, 'knee extensor groove'; lg, longitudinal groove; lk, lateral kink; mc, medial condyle; om, outer malleolus; op, obturator plate; pp, pubic peduncle; pvr, 'postero-ventral ridge'; rd, ridge; tn, tibial notch; vr, ventral ridge.

### 4.3. Type locality and horizon

Greenish siltstone at the lower third of the 'middle interval' of the La Quinta Formation [25], exposed at a secondary road (72°01'06.60 W, 08°09'03.47 N) next to the north of the type-section and about 4 km northwest of the town of La Grita, Jáuregui municipality, Táchira State, Venezuela (figure 1).

### 4.4. Diagnosis

Distinguished from all other theropods by the following unique combination of characters (possible automorphy among early theropods marked with an asterisk): caudolateral corner of the fibular condyle forms a sharp angle in proximal view and extends slightly more caudally than the medial condyle\*; distal articulation of the tibia more than 50% broader transversely than craniocaudally (despite slight postdepositional deformation); astragalar buttress occupies between one-third and one-quarter of the craniocaudal depth of the distal surface of the bone, extending obliquely across the cranial surface of the



distal part of the tibia at an angle of approximately  $35^\circ$  to the distal margin, and flexing proximally at the lateral 20% of the transverse width of the distal shaft; line connecting the outer and inner tibial malleoli in cranial view forms an angle of *ca*  $80^\circ$  to the long axis of the bone.

#### 4.5. Comments

Regardless of the peculiar morphology of the distal part of its tibia, the uniqueness and inclusivity of *T. admirabilis* is inferred for topotypical reasons. Its holotype tibia and referred ischium were found at the same locality, have concordant phylogenetic signals, equivalent relative sizes, and are the only unequivocal theropod remains recovered from the La Quinta Formation after more than 20 years of research.

### 5. Description

Based on the proportions of its holotype right tibia (IVIC-P-2867), *T. admirabilis* was a small theropod, with an estimated body length slightly over 1.5 m. The approximately 25 cm long tibia is on average 20 mm broad across the mid-shaft; these skeletal proportions are shared by other basal theropods of corresponding size such as '*Syntarsus kayentakatae*' [38] and the 'Petrified Forest' coelophysoid [39].

The tibia is nearly complete (figure 3*a–e*), but fractured in several positions. The proximal articulation is subtriangular, with subequal medial and fibular condyles (the latter extending slightly more caudally) separated by a subtle caudal notch ('in' in figure 3*b*). The caudomedial corner of the medial condyle is rounded, whereas the laterocaudal corner of the fibular condyle forms a sharp angle of approximately  $75–80^\circ$ . The articular surface is excavated at its centre, leading to three elongated depressions that separate the cnemial crest and the caudal condyles. The cnemial crest is notably expanded cranially from the tibial shaft and slightly proximally relative to the fibular condyle, although level with the medial condyle. Measured from the caudal margin of the incisura tibialis, the crest occupies about 50% of the craniocaudal length of the articulation. The incisura tibialis is well developed, but shallow. It separates the fibular condyle from a proximodistally expanded, ridge-like tubercle ('pvr' in figure 3*a*) on the cranial end of the lateral side of the cnemial crest, giving the latter structure a laterally curving appearance, although it cannot be considered 'hooked' [40]. A subtle, distally deeper 'knee extensor groove' [41] extends laterodistally to medioproximally along the lateral surface of the cnemial crest, between the cranial margin of the crest and the ridge-like tubercle, as it has been described for some ceratosaurs [42,43]. The lateral surface of the proximal part of the tibia bears longitudinally oriented structures related to the articulation of the fibula. The cranialmost of these is the lateral depression associated with the incisura tibialis, which extends for less than one fourth of the length of the bone, and tapers distally. Its smooth surface reaches the proximal margin of the bone, and caudally borders the nearly vertical ridge-like tubercle mentioned above, i.e. the 'posteroventral ridge' [44]. The fibular crest steeply marks the caudal margin of the incisura. Although this side is slightly damaged, it is possible to see that the fibular crest reaches the proximal end of the tibia as a well-developed ridge, as in all non-tetanuran neotheropods [45].

The tarsal articulation at the distal portion of the tibia is composed of two facets: the distal articulation *per se* and the proximally inset astragalar buttress. These are separated by a flat vertical surface that, along with the astragalar buttress, housed the ascending process of the astragalus. The distal articulation *per se* has a lateromedially elongated subtriangular distal outline, with a long-concave caudal margin, a short-straight medial margin and a long-sigmoid craniolateral margin. Together they form sharp caudolateral and craniomedial corners, and a low-angled caudomedial corner. The concavity of the caudal margin extends proximally along the tibial shaft, but seems exaggerated by taphonomic collapse of the outer bone surface. The medial portion of the craniolateral margin is concave and laterally limited by a distinct kink ('lk' in figure 3*d*). This corresponds to the distal expression of a ridge ('rd' in figure 3*e*) that extends along the vertical articulation facet for the astragalar ascending process and separates the facet for the latter from the craniolateral facet for the distal end of the fibula, as seen in other basal theropods (e.g. *Dilophosaurus wetherilli*, UCMP 77270; *Liliensternus liliensterni*, HMN MB.R. 2175; *Zupaysaurus rougieri*, UPLR 076). The portion of the tibia lateral to that corresponds to the outer malleolus, which tapers caudolaterally in distal view and has a longitudinally striated cranial surface. It is not much expanded laterally, but probably backed up part of the fibula. It has a rounded, rather than tabular [9,46] outline in cranial or caudal views and is slight distally projected, resulting in a slightly oblique angulation of the distal margin of the tibia. The astragalar buttress extends for about 80% of the mediolateral width of the distal portion of the tibia, but makes up less than one third of

its craniocaudal breadth. It corresponds to a flat surface that extends straight (in cranial view) from the mediolateral corner of the bone, at an angle of about  $55^\circ$  to the long axis of the shaft. The lateral portion of the buttress is also slightly inclined proximocaudally to distocranially, forming a subtle slot for the ascending process of the astragalus. This leads to the formation of a groove ('lg' in figure 3d) in the lateral surface of the buttress that extends proximally along the lateral surface of the tibial shaft. Finally, the distal articulation *per se* has a subtle excavation on its caudomedial corner, an incipient version of the 'tibial notch' [8] seen in several other theropods (e.g. *Sinraptor dongi* [47]; *Li. liliensterni*, HMN MB.R. 2175).

The partial ischium (IVIC-P-2868) is incomplete distally and also lacks most of the pubic peduncle. Only the ventral portion of the iliac articulation is preserved, which faces mainly cranially, lacking the hypertrophied antitrochanter seen in most coelophysoids (e.g. *Syntarsus rhodesiensis*, QG 1; *Coelophysus bauri*, NMMNHS 55336; *Li. liliensterni*, HMN MB.R. 2175). Between the iliac articulation and the pubic peduncle, the incised cranial margin of the bone is finished and mediolaterally convex. This implies a fully open acetabulum, where the ischium does not contribute to the inner acetabular wall. Yet, unlike from most tetanurans [47–50], there is no sign of an obturator notch between the pubic peduncle and obturator plate. Only about one fourth of the rod-like ischial shaft is preserved, the dorsal margin of which is not fully extracted from the rock. Its dorsolateral corner is continuous to a low ridge that extends towards the iliac articulation, whereas a sharper ridge ('vr' in figure 3f) extends from the ventrolateral corner of the shaft towards the dorsal margin of the pubic peduncle. The latter sets the dorsal boundary of the laminar obturator plate, and is separated from the dorsal ridge by a shallow depression on the ischial body, caudal to the acetabular incisure. Only the caudal half of the obturator plate is preserved, which has a slightly sigmoid ventral margin and is separated from the shaft by a well-developed distal notch, as typical of basal neotheropods [45].

## 6. Comparative approach

Although the holotype of *T. admirabilis* consists only of one tibia (IVIC-P-2867), the element shows numerous characters that help to clarify its phylogenetic position and testify to its taxonomic distinctiveness. In comparison with dinosaurian outgroups, basal saurischians and basal sauropodomorphs, the tibia of *T. admirabilis* shows several synapomorphies of Theropoda and Neotheropoda. A cnemial crest is synapomorphic for dinosauiromorphs, and the presence of a slightly laterally curved crest, as present in *T. admirabilis*, has been found as a dinosaur synapomorphy by Nesbitt [51] and references therein, but the cnemial crest of basal saurischians, such as the herrerasaurs *Staurikosaurus pricei* (MCZ 1669) and *Herrerasaurus ischigualastensis* (PVL 2566, PVSJ 373) is craniocaudally short and accounts for one-third to two-fifths of the craniocaudal width of the proximal end. The same is true for the basal sauropodomorphs *Saturnalia tupiniquim* (MCP 3944-PV) and *Panphagia protos* (PVSJ 874) and most basal ornithischians such as *Pisanosaurus mertii* [52] and *Lesothosaurus diagnosticus* (NHMUK RUB 17). By contrast, the cnemial crest makes up half or more of the craniocaudal width of the proximal surface of the tibia in basal theropods, e.g. '*Sy.*' *kayentakatae* [53], *Li. liliensterni* (MB.R. 2175), *Elaphrosaurus bambergi* (MB.R. 4960), and this is also the case in *T. admirabilis*. Several taxa that are currently considered to be amongst the most basal theropods, such as *Tawa hallae* (GR 241–242) and *Eodromaesus murphi* (PVSJ 560–562) also have a relatively short cnemial crest, indicating that *T. admirabilis* belongs to the less inclusive neotheropod clade.

As long recognized [36], theropod tibiae differ from those of other archosaurs in the presence of a ridge/crest for the attachment of the fibula on the lateral side of the proximal part of the shaft. Although a roughened patch is present in a similar position in some basal saurischians (e.g. *Eoraptor lunensis* [54]) and a sharp ridge is seen in silesaurids [55] and some basal ornithischians [56], this is only developed as a strong crest in theropods, as it is seen in *T. admirabilis*. Finally, in non-dinosaur dinosauriforms, basal saurischians and sauropodomorphs, the distal articulation of the tibia is craniocaudally wide, as is the slot that receives the ascending process of the astragalus [55,57–59]; a condition also present in *Eod. murphi* (PVSJ 560–562), *Eor. lunensis* (PVSJ 512) and *Tawa hallae* (GR 241–242). By contrast, most theropods have the facet for the ascending process of the astragalus restricted to the cranial part of a craniocaudally narrow distal articulation of the tibia. This is also seen in *T. admirabilis*, further confirming the neotheropod affinities of this taxon. Ornithischians also have a craniocaudally narrow distal articulation of the tibia (e.g. *Le. diagnosticus*, NHMUK RUB 17; *Scutellosaurus lawleri*, MNA V175), but the slot for the ascending process of the astragalus is not as defined as in saurischians, including theropods like *T. admirabilis*.

The placement of *T. admirabilis* among neotheropods is more difficult to determine, but the type tibia shows a combination of plesiomorphic and apomorphic traits that helps to narrow down its affinities. In basal dinosauromorphs, herrerasaurs and many basal sauropodomorphs, a line connecting the distalmost points of the lateral and medial malleoli of the tibia would form an approximate right angle with the long axis of the distal part of the shaft in cranial view [52,55,57,59–61]. By contrast, in most theropods (but also in ornithischians [62,63]), the outer malleolus reaches further distally than the inner malleolus so that this line forms an oblique angle to the long axis of the shaft. In some basal taxa, such as *D. wetherilli* (UCMP V 4214) and *Gojirasaurus quayi* (MB.R. 1985), but also in *El. bambergi* (MB.R. 4997), the situation resembles that of non-theropod saurischians, and the angle is still close to a right angle in other basal forms (*Li. liliensterni* and *Z. rougieri* [8]). By contrast, the outer malleolus is further distally placed in most averostrans (*Torvosaurus tanneri* [64]; *Majungasaurus crenatissimus* [42]; *Si. dongi* [47]; see also [65]). In *T. admirabilis*, that virtual line is angled at about 80°, approaching the averostran condition (see the electronic supplementary material, figure S6) and indicating that the new taxon is more derived on that line than coelophysoids.

Likewise, in basal neotheropods, the astragalar buttress on the cranial side of the distal portion of the tibia is craniocaudally broad and broadens laterally, resulting in a rectangular outline of the distal end of the bone in distal view (*Z. rougieri*, UPLR 076; *Li. liliensterni*, HMN MB.R. 2175; *Sy. rhodesiensis*, QG 691, 792; *D. wetherilli*, UCMP 77270; ‘*Sy. kayentakatae*’ [53]; ‘Petrified Forest’ coelophysoid, UCMP 128618; ‘Snyder Quarry’ theropod, NMMNHS P-29046). By contrast, in averostrans, the astragalar buttress is craniocaudally compressed and of subequal breadth throughout its width, so that the distal outline of the tibia is more triangular. The condition in *T. admirabilis* approaches the latter state, further indicating that this taxon is closer to averostrans than to coelophysoids or members of the ‘*Dilophosaurus* clade’ [9].

However, several characters indicate that *T. admirabilis* is placed outside Tetanurae and, most probably, also outside Averostra. Two different morphologies of the fibular crest are seen among theropods [45]; basal forms present a lower, more proximally placed crest connected to the proximal end of the tibia by a well-defined ridge, whereas tetanurans have a higher, more distally placed crest that arises directly out of the shaft and lacks a proximal connection. More precisely, the fibular crest of some basal tetanurans is still connected to the proximal end by a low lateral swelling [4]. In *T. admirabilis*, the fibular crest is connected to the proximal end, corresponding to the non-tetanuran condition found in basal theropods.

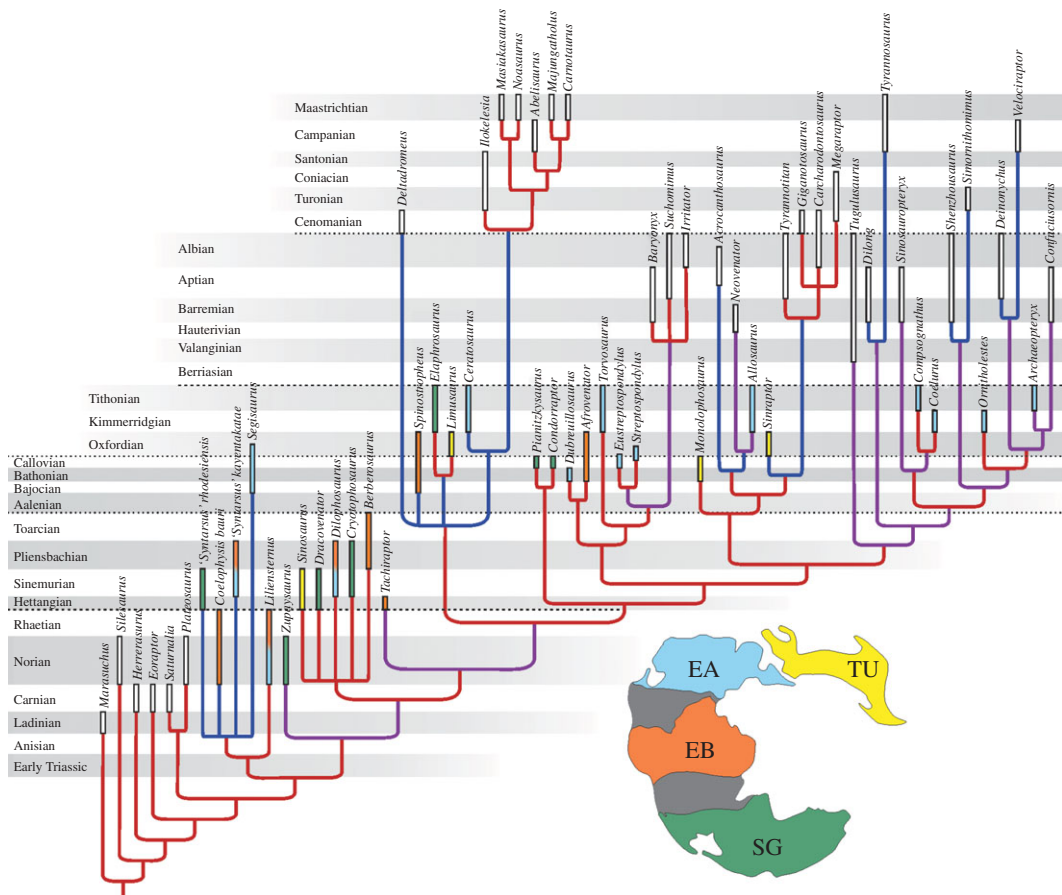
In addition, characters of the distal part of the tibia also indicate that *T. admirabilis* lies outside Averostra. In basal theropods, the astragalar buttress extends obliquely across the cranial surface of the distal portion of the tibia and flexes proximally adjacent to the lateral margin of the shaft [5,8]. In ceratosaurs [42,66,67] and basal tetanurans [47,48,64,68], this proximal flexure is placed more medially, towards the level of the mid-width of the shaft. In *T. admirabilis*, the position of this flexure, and its rather marked appearance (in contrast to a more gradual bend in tetanurans), corresponds to the condition seen in basal theropods. Furthermore, the buttress of *T. admirabilis* forms a narrow, but craniocaudally measurable platform, differing from the faint structure seen in ceratosaurs and basal tetanurans. In summary, the combination of characters exhibited by the tibia of *T. admirabilis* implies a non-averostran relationship, though probably as a sister taxon to this clade.

### 6.1. Taxonomic distinctiveness of *Tachiraptor admirabilis*

Given the fragmentary nature of the specimens referred to *T. admirabilis*, some comments on its distinction as a separate taxon might be warranted. As outlined above, the character combination exhibited by this taxon is unusual and helps to distinguish it from all other theropods described so far. Specifically, the combination of a craniocaudally narrow astragalar buttress that remains of subequal breadth throughout its width with a laterally placed bend in the buttress is unseen in any other known theropod and can thus currently be regarded as diagnostic of *T. admirabilis*. However, since this is a combination of derived (excluding it from Coelophysoidea and other basal theropods) and plesiomorphic (excluding it from Averostra) characters, future finds might demonstrate that such a combination may not be unique for this taxon, but characterize close averostran outgroups.

However, in addition to this unique character combination, *T. admirabilis* also differs from other early theropods in the morphology of the fibular condyle, which extends slightly more caudally than the medial condyle and forms a sharp angle. In theropod outgroups, such as *Eor. lunensis* [54], *Sa. tupiniquim* [59], *P. protos* [PVSJ 874] and herrerasaurs [57,60], the caudolateral corner of the fibular condyle is rounded and does not reach as far caudally as the medial condyle. Although the fibular condyle is more caudally extensive in several basal theropods (e.g. *D. wetherilli*, UCMP V 4214 [45], *Li. liliensterni*, MBR 2175, *Masiakasaurus knopfleri* [41]), its caudolateral corner is rounded. This is also the case in more derived





**Figure 4.** Strict consensus of the 1107 MPTs recovered with the inclusion of *Tachiraptor admirabilis* into the dataset of Xu *et al.* [12]. Branch colours represent extension of ghost lineages in millions of years (red, less than 15; purple, 15–35; blue, more than 35). Taxon bar lengths correspond to their chronologic distribution/uncertainty (based on various sources). Bar colours match those of the index Middle Jurassic palaeomap [70] and correspond to the provenance of Triassic/Jurassic theropods from the defined palaeobiogeographic provinces (SG, South Gondwana; EA, Euramerica; TU, Transurals; EB, Equatorial Belt) at the time of their occurrences.

theropods [9,42,48,64], in which the fibular condyle ends well cranial to the caudal margin of the medial condyle. Thus, the shape and extent of the fibular condyle may be autapomorphic for *T. admirabilis*.

## 6.2. Affinities of *Tachiraptor admirabilis*

To explore the phylogenetic placement of *T. admirabilis* within Theropoda, the new taxon was scored into the taxon/character matrix of Xu *et al.* [12]. This is mainly based on the original dataset of Smith *et al.* [9], which is the most recent cladistic study to comprehensively sample the evolutionary segment (basal Neotheropoda) into which *T. admirabilis* seems to belong. The parsimony analysis was performed using TNT [69], employing the same parameters for heuristic searches (number of replicates, ordering strategies) as Xu *et al.* [12], but excluding its controversial 413th character. A total of 21 characters were scored for the holotype tibia and associated ischium of *T. admirabilis*, as well as for the astragalar anatomy inferred from tibial traits. In total, this corresponds to slightly more than 5% of the characters in the dataset. A total of 1107 most parsimonious trees (MPTs), with lengths of 1144 steps, were recovered. Their strict consensus (figure 4) agrees with the results of Xu *et al.* [12] in all aspects, and recovers *T. admirabilis* as the sister taxon to *Averostra*. The same position is found if *T. admirabilis* is scored in the original dataset of Smith *et al.* [9]. Additionally, if the data matrix of Smith *et al.* is modified as suggested by Brusatte *et al.* [71], the strict consensus of 56 MPTs shows *T. admirabilis* forming a large polytomy together with *Cryolophosaurus ellioti*, *D. wetherilli*, *Dracovenator regenti*, *Sinosaurus triassicus*, *Z. rougieri* and *Averostra*. Details of the phylogenetic analyses can be found in the electronic supplementary material.

## 7. Discussion: biochronology and palaeobiogeography

Averostra is the main clade of theropods and includes all known post-Early Jurassic forms, but its origin is still poorly understood. Unambiguous records of Averostra, i.e. Tetanurae and Ceratosauria, are no older than Middle Jurassic [3,4], but recent data from central Patagonia constrains the major diversifications of Tetanurae and Ceratosauria to as early as the Toarcian-Aalenian (Early–Middle Jurassic) boundary [72]. A number of older taxa have variously been regarded as early averostrans, but their phylogenetic positions are disputed. Possibly the best candidate for an Early Jurassic averostran is *C. ellioti* from Antarctica [9,73]. Sometimes considered an early allosauroid [74], it has recently been recovered as a basal tetanuran, outside the megalosauroid-neotetanuran dichotomy [4]. However, other analyses found this taxon as part of an informally named ‘*Dilophosaurus* clade’ outside Averostra [7,9,12,75]. The same is the case for *Sinosaurus triassicus* (i.e. ‘*Dilophosaurus*’ *sinensis*), which has variably been regarded as a basal member of the Tetanurae [4] or the ‘*Dilophosaurus* clade’ [7,9,12]. Finally, *Berberosaurus liassicus* from the Pliensbachian-Toarcian of Morocco was originally proposed to be an abelisauroid [10], and later found to be a more basal ceratosaur [2,3]. However, Xu *et al.* [12] found this taxon outside Averostra, also as part of the ‘*Dilophosaurus* clade’.

The detailed phylogenetic arrangement of basal theropods has implications for our understanding of the timing of Averostra origins. The placement of several Early Jurassic taxa in the ‘*Dilophosaurus* clade’ [7,9,12,75] implies a minimal ghost lineage of 25 Myr, with the origin of Averostra in the Hettangian at the latest. On the contrary, the hypothesis of Carrano *et al.* [4], with the Hettangian–Sinemurian *Sinosaurus triassicus* as the oldest averostran and the latter clade forming the sister group of Coelophysoidea, which also includes *D. wetherilli*, implies a minimal ghost lineage of nearly 30 Myr and a Norian minimal age for the origin of Averostra. It is worth mentioning, however, that the analysis of Carrano *et al.* [4] focuses on tetanuran interrelationships and has a quite limited sampling of more basal taxa.

The discovery of *T. admirabilis* and its phylogenetic placement as the sister taxon of Averostra would considerably reduce the ghost lineage for the latter clade under the phylogenetic hypothesis of Carrano *et al.* [4], as it places the minimal age for the origin of this group in the Hettangian, matching the probable age for *Sinosaurus triassicus* [76]. On the contrary, under the phylogenetic hypothesis of Nesbitt *et al.* [11,77,78], the inferred age and phylogenetic position of *T. admirabilis* would enlarge the stratigraphic gap at the base of Averostra. In particular, under an inclusive ‘*Dilophosaurus* clade’ hypothesis, as favoured by our analysis, an equally large (nearly 30 Myr) ghost lineage would be recovered for Averostra (figure 4). Indeed, in the phylogenetic hypothesis presented here, a longer (more than 35 Myr) ghost lineage is seen only for Abelisauroidea, as the other cases (marked in blue in figure 4) are obvious biases caused by the small sample size of the corresponding groups (tyrannosaurs, ornithomimosaurids and dromaeosaurs) or result from ambiguous (e.g. coelophysoids) or controversial (e.g. *Acrocanthosaurus*, *Deltadromeus*, *Sinraptor* [4,79]) positioning of taxa. Still, the Abelisauroidea ghost lineage has been ‘shifted’ to the less inclusive abelisaurid and noasaurid subgroups by the discovery of *Eoabelisaurus mefi* from the Middle Jurassic of Argentina [3]. Indeed, depending on the chosen phylogenetic hypothesis, the greatest stratigraphic gap in the Jurassic record of Theropoda appears to be that at the stem of the Averostra.

The peculiar provenance of *T. admirabilis*, coupled with the long ghost range of its sister group, justifies a survey for background palaeobiogeographic patterns, as the stratigraphic gap of that lineage may be in part explained by the meagre palaeontological sampling from certain Gondwanan areas [13]. Yet, a straightforward Laurasia–Gondwana dichotomy, as well as views based on modern day continental partitioning, were challenged by alternative approaches that integrate data from past climate and biome distributions [3,80]. In our case, several lines of evidence suggest that northern South America was more closely associated with the Laurasian realm (e.g. southern North America) than to southern Gondwana [70,81]. Indeed, Rees *et al.* [70] suggest that, together with North Africa, the former areas were part of a summer-wet equatorial belt bordered to the north and south by extensive deserts. Accordingly, in order to further investigate the palaeobiogeographic patterns of Jurassic theropod faunas, we identify four biogeographic provinces based on Triassic–Jurassic palaeogeographic reconstructions [70,82]. These include an Equatorial Belt separated by desert belts from South Gondwana and a northern landmass, which is further divided longitudinally into Euramerican and Trans-Uralian domains (figure 4). This latter separation is more pronounced from the Middle Jurassic onwards, with the expansion of the Turgai seaway [83], but East Asia (which hosts most of the Asian theropod records of Jurassic age) was hitherto separated from western parts of Laurasia by the Mongol–Okhotsk Ocean [82,84].

Because of the major uncertainties regarding basal theropod evolution, we decided not to employ the resulting topology of our analysis (which aimed to place *T. admirabilis* in a phylogenetic context, not to solve basal theropod relationships) to conduct a dispersal–vicariance analysis [85,86] using the

software RASP [87]. Instead, we assembled an informal supertree of basal theropods, with the framework of our reanalysis of Xu *et al.* [12], with the addition of phylogenetic hypotheses for Coelophysoidea [8], Ceratosauria [3] and Tetanurae [4], slightly modified to produce a fully resolved tree (see the electronic supplementary material figure S4). Only Triassic–Jurassic neotheropods were included, with younger sister taxa represented by terminal branches. Ancestral geographical ranges were then mapped under those topological constraints, with the biogeographic events (i.e. expansion of range/dispersal) restricted to adjacent areas, i.e. between Euramerica and the Equatorial Belt, and between those areas and, respectively, the Transurals and South Gondwana. Our results (see the electronic supplementary material) resolve the ancestral range for Tetanurae as the Transurals plus Euramerica or the former area alone (with prevalence of this latter reconstruction). For Ceratosauria, the ancestral range is more southern: Equatorial Belt or that area plus South Gondwana. Down the tree, the ancestral range for Averostrans is either Transuralian or a more western area including Euramerica plus the Equatorial Belt (with most reconstructions supporting the first option). The record of *T. admirabilis* in the latter area indicates a more southern ancestral range for the clade it forms with Averostrans, i.e. the Equatorial Belt or that area plus South Gondwana.

The above results highlight the pivotal role of the Equatorial Belt in the Jurassic biogeographic events that shaped theropod evolution. Indeed, the worldwide distribution of most non-averostran groups in the Early Jurassic [6,88] shows that there was ample space for a rapid dispersal/extension of geographical ranges at that time. In this context, the more northern ancestral range of Tetanurae and more southern ancestral range of Ceratosauria, rather intuitively hints at an intermediary ‘connection’ range for stem-averostrans, into which the record *T. admirabilis* straightforwardly fits. In the end, the ancestral range of Averostrans suggests that the stratigraphic gap at its base is more likely to be filled by new Early Jurassic records from the northern continents [38,88,89] or north Gondwana [90] than from more southern areas [7,73] of that supercontinent.

**Acknowledgements.** We thank ‘Instituto del Patrimonio Cultural’ (IPC) for the permission for collecting the fossil material, and Pepe Zambrano for logistical support at different stages of this project. A.D.R. and A.S. thank David Fastovsky, Marisol Montellano-Ballesteros, Mouloud Benammi, Omar Contreras and Rene Hernández, for their camaraderie and assistance during the fieldworks. M.C.L. thanks Eduardo Almeida (FFCLRP-USP) for help with DIVA analyses. We also thank Paul Barrett, Steve Brusatte and an anonymous reviewer for comments that greatly enhanced the paper. Thanks also to Pepe Zambrano for all his help and camaraderie and for allowing the excavation on his property.

**Funding statement.** This is contribution no. 61 of Laboratório de Paleontologia, FFCLRP-USP, funded by the Brazilian agency FAPESP (grant no. 2014/03835–3), and a contribution of the ‘PaleoMapas de Venezuela’ project (IVIC-1096), funded by MCTI (Venezuelan Science, Technology, and Innovation Ministry), with contribution of ‘Total de Venezuela’.

## References

- Ezcurra MD, Cuny G. 2007 The coelophysoid *Lophostropheus airelensis*, gen. nov.: a review of the systematics of ‘*Liliensternus airelensis*’ from the Triassic–Jurassic outcrops of Normandy (France). *J. Vert. Paleontol.* **27**, 73–86. (doi:10.1671/0272-4634(2007)27[73:TCLAGN]2.0.CO;2)
- Carrano MT, Sampson SD. 2008 The phylogeny of Ceratosauria (Dinosauria: Theropoda). *J. Syst. Palaeontol.* **6**, 183–236. (doi:10.1017/S1477201907002246)
- Pol D, Rauhut OWM. 2012 A Middle Jurassic abelisaurid from Patagonia and the early diversification of theropod dinosaurs. *Proc. R. Soc. B* **279**, 3170–3175. (doi:10.1098/rspb.2012.0660)
- Carrano MT, Benson RBJ, Sampson SD. 2012 The phylogeny of Tetanurae (Dinosauria: Theropoda). *J. Syst. Palaeontol.* **10**, 211–300. (doi:10.1080/14772019.2011.630927)
- Welles SP. 1984 *Dilophosaurus wetherilli* (Dinosauria, Theropoda) osteology and comparisons. *Palaeontographica Abt. A* **185**, 85–180.
- Hu S. 1993 [A new Theropoda (*Dilophosaurus sinensis* sp. nov.) from Yunnan, China]. *Vert. Palaeontol.* **31**, 65–69. [In Chinese.]
- Yates AM. 2005 A new theropod dinosaur from the Early Jurassic of South Africa and its implications for the early evolution of theropods. *Palaeontol. Afr.* **41**, 105–122.
- Ezcurra MD, Novas FE. 2007 Phylogenetic relationships of the Triassic theropod *Zupaysaurus rougieri* from NW Argentina. *Hist. Biol.* **19**, 35–72. (doi:10.1080/08912960600845791)
- Smith ND, Makovicky PJ, Pol D, Hammer WR, Currie PJ. 2007 Osteology of *Cryolophosaurus ellioti* (Dinosauria: Theropoda) from the Early Jurassic of Antarctica and implications for early theropod evolution. *Zool. J. Linn. Soc.* **151**, 377–421. (doi:10.1111/j.1096-3642.2007.00325.x)
- Allain R, Tykoski E, Aquesbi N, Jalil N-E, Monbaron M, Russell D, Taquet P. 2007 An abelisaurid (Dinosauria: Theropoda) from the Early Jurassic of the High Atlas mountains, Morocco, and the radiation of ceratosaurs. *J. Vert. Paleontol.* **27**, 610–624. (doi:10.1671/0272-4634(2007)27[610:AADFTT]2.0.CO;2)
- Sues HD, Nesbitt SJ, Berman DS, Henrici AC. 2011 A late-surviving basal theropod dinosaur from the latest Triassic of North America. *Proc. R. Soc. B* **278**, 3459–3464. (doi:10.1098/rspb.2011.0410)
- Xu X *et al.* 2009 A Jurassic ceratopsian from China helps clarify avian digital homologies. *Nature* **459**, 940–944. (doi:10.1038/nature08124)
- Rauhut OWM, Lopez-Arbarello A. 2008 Archosaur evolution during the Jurassic: a southern perspective. *Rev. Asoc. Geol. Argentina* **63**, 557–585.
- Price LI. 1960 Dentes de Theropoda num testemunho de sonda no estado do Amazonas. *An. Acad. Bras. Cienc.* **32**, 79–84.
- Weishampel DB *et al.* 2004 Dinosaur distribution. In *The Dinosauria* (eds DB Weishampel, P Dodson, H Osmólska), pp. 47–70, 2nd edn. Berkeley, CA: University of California Press.
- Novas FE. 2009 *The Age of Dinosaurs in South America*, p. 452. Bloomington, IL: Indiana University Press.
- Russell DE, Rivas OO, Batail B, Russell DA. 1992 Découverte de vertébrés fossiles dans la Formation de La Quinta, Jurassique du Venezuela occidental. *CR. Acad. Sci. Paris, sér. 2*, **314**, 1247–1252.
- Moody JM. 1997 Theropod teeth from the Jurassic of Venezuela. *Bol. Soc. Venez. Geólogos* **22**, 37–42.
- Barrett PM, Butler RJ, Novas FE, Moore-Fay SC, Moody JM, Clark JM, Sánchez-Villagra MR. 2008 Dinosaur remains from the La Quinta Formation

- (Lower or Middle Jurassic) of the Venezuelan Andes. *Paläontol. Z.* **82**, 163–177. (doi:10.1007/BF02988407)
20. Barrett PM, Butler RJ, Mundil R, Scheyer TM, Irmis RB, Sánchez-Villagra MR. 2014 A palaeoequatorial ornithischian and new constraints on early dinosaur diversification. *Proc. R. Soc. B* **281**, 1–7. (doi:10.1098/rspb.2014.1147)
  21. Maze WB. 1984 Jurassic La Quinta Formation in the Sierra de Perijá, northwestern Venezuela: Geology and tectonic environment of red beds and volcanic rocks. *Geol. Soc. Am. Mem.* **162**, 263–282.
  22. Arminio JF, Hernández M, Pilloud A, Audemard F. 2004 *New Insights on the Jurassic Rift Succession of the Mérida Andes, Venezuela: implications for New Petroleum Systems in Northern South America*. Cancun–Mexico: AAPG Memoir, International Conference and Exhibition.
  23. Lugo J, Mann P. 1995 Jurassic–Eocene tectonic evolution of Maracaibo basin, Venezuela. *Am. Assoc. Pet. Geol. Mem.* **62**, 699–725.
  24. Castillo J, Gose WA, Perarnau A. 1991 Paleomagnetic results from Mesozoic strata in the Mérida Andes, Venezuela. *J. Geophys. Res.* **96**, 6011–6022. (doi:10.1029/90JB02282)
  25. Schubert C. 1986 Stratigraphy of the Jurassic La Quinta Formation, Mérida Andes, Venezuela: type section. *Z. Deutsch. Geol. Ges.* **137**, 391–411.
  26. Benedetto G, Odreman O. 1977 Nuevas evidencias paleontológicas en la Formación La Quinta, su edad y correlación con las unidades aflorantes en la Sierra de Perijá y Cordillera Oriental de Colombia. *Memorias del V Congreso Geológico de Venezuela* **1**, 87–106.
  27. Odreman O, Benedetto G. 1977 Paleontología y edad de la Formación Tinacoa, Sierra de Perijá, Venezuela. *Memorias del V Congreso Geológico de Venezuela* **1**, 15–32.
  28. Burkley LA. 1976 *Geochronology of the Central Venezuelan Andes*, p. 150. PhD thesis, Case Western Reserve University, Cleveland, OH, USA.
  29. Schubert C, Sifontes RS, Padrón VE, Vélez JR, Loaiza PA. 1979 Formación La Quinta (Jurásico), andes merideños: geología de la sección tipo. *Acta Cien. Venez.* **30**, 42–55.
  30. Ramezani J, Hoke GD, Fastovsky DE, Bowring SA, Therrien F, Dworkin SI, Atchley SC, Nordt LC. 2011 High-precision U–Pb zircon geochronology of the Late Triassic Chinle Formation, Petrified Forest National Park (Arizona, USA): temporal constraints on the early evolution of dinosaurs. *Geol. Soc. Am. Bull.* **123**, 2142–2159. (doi:10.1130/B30433.1)
  31. Mattinson JM. 2005 Zircon U/Pb chemical abrasion (CA-TIMS) method; combined annealing and multi-step partial dissolution analysis for improved precision and accuracy of zircon ages. *Chem. Geol.* **220**, 47–66. (doi:10.1016/j.chemgeo.2005.03.011)
  32. Bowring JF, McLean NM, Bowring SA. 2011 Engineering cyber infrastructure for U–Pb geochronology: Tripoli and U–Pb\_Redux. *Geochem. Geophys. Geosyst.* **12**, Q0AA19. (doi:10.1029/2010GC003479)
  33. McLean NM, Bowring JF, Bowring SA. 2011 An algorithm for U–Pb isotope dilution data reduction and uncertainty propagation. *Geochem. Geophys. Geosyst.* **12**, Q0AA18. (doi:10.1029/2010GC003478)
  34. Jaffey AH, Flynn KF, Glendenin LE, Bentley WC, Essling AM. 1971 Precision measurement of half-lives and specific activities of <sup>235</sup>U and <sup>238</sup>U. *Phys. Rev. C* **4**, 1889–1906. (doi:10.1103/PhysRevC.4.1889)
  35. Wotzlaw J-F, Guex J, Bartolini A, Gallet Y, Krystyn L, McRoberts CA, Taylor D, Schoene B, Schaltegger U. 2014 Towards accurate numerical calibration of the Late Triassic: high-precision U–Pb geochronology constraints on the duration of the Rhaetian. *Geology* **42**, 10. (doi:10.1130/g35612.1)
  36. Gauthier J. 1984 Saurischian monophyly and the origin of birds. *Mem. California Acad. Sci.* **8**, 1–55.
  37. Sereno PC. 1998 A rationale for phylogenetic definitions, with application to the higher-level taxonomy of Dinosauria. *N. Jb. Geol. Paläontol. Abhandl.* **210**, 41–83.
  38. Rowe T. 1989 A new species of the theropod dinosaur *Syntarsus* from the Early Jurassic Kayenta Formation of Arizona. *J. Vert. Paleontol.* **9**, 125–136. (doi:10.1080/02724634.1989.10011748)
  39. Padian K. 1986 On the type material of *Coelophysis* Cope (Saurischia: Theropoda) and a new specimen from the Petrified Forest of Arizona (Late Triassic: Chinle Formation). In *The beginning of the age of dinosaurs* (ed. K Padian), pp. 45–60. Cambridge, MA: Cambridge University Press.
  40. Sampson SD, Carrano MT, Forster CA. 2001 A bizarre predatory dinosaur from the Late Cretaceous of Madagascar. *Nature* **409**, 504–506. (doi:10.1038/35054046)
  41. Carrano MT, Sampson SD, Forster CA. 2002 The osteology of *Masiakasaurus knopfleri*, a small abelisauroid (Dinosauria: Theropoda) from the Late Cretaceous of Madagascar. *J. Vert. Paleontol.* **22**, 510–534. (doi:10.1671/0272-4634(2002)022[0510:TOOMKA]2.0.CO;2)
  42. Carrano MT. 2007 The appendicular skeleton of *Majungasaurus crenatissimus* (Theropoda: Abelisauridae) from the Late Cretaceous of Madagascar. *Soc. Vert. Paleontol. Mem.* **8**, 163–179. (doi:10.1671/0272-4634(2007)27[163:TASOMC]2.0.CO;2)
  43. Rauhut OWM. 2011 Theropod dinosaurs from the Late Jurassic of Tendaguru (Tanzania). *Spec. Pap. Palaeontol.* **86**, 195–239.
  44. Hocknull SA, White MA, Tischler TR, Cook AG, Calleja ND, Sloan T, Elliott DA. 2009 New Mid-Cretaceous (latest Albian) dinosaurs from Winton, Queensland, Australia. *PLoS ONE* **4**, e6190. (doi:10.1371/journal.pone.0006190)
  45. Rauhut OWM. 2003 The interrelationships and evolution of basal theropod dinosaurs. *Spec. Pap. Palaeontol.* **69**, 1–213.
  46. Sereno PC. 1999 The evolution of dinosaurs. *Science* **284**, 2137–2147. (doi:10.1126/science.284.5423.2137)
  47. Currie PJ, Zhao X-J. 1994 A new carnosaur (Dinosauria, Theropoda) from the Jurassic of Xinjiang, People's Republic of China. *Can. J. Earth Sci.* **30** [for 1993], 2037–2081.
  48. Madsen Jr JH. 1976 *Allosaurus fragilis*: a revised osteology. *Utah Geol. Min. Surv. Bull.* **109**, 1–163.
  49. Harris JD. 1998 A reanalysis of *Acrocanthosaurus atokensis*, its phylogenetic status, and paleobiogeographic implications, based on a new specimen from Texas. *New Mexico Mus. Nat. Hist. Sci. Bull.* **13**, 1–75. (doi:10.1080/0022293460865417)
  50. Brusatte S, Benson RBJ, Hutt S. 2008 The osteology of *Neovenator salerii* (Dinosauria: Theropoda) from the Wealden Group (Barremian) of the Isle of Wight. *Palaeontogr. Soc. Monogr.* **162**, 1–75.
  51. Nesbitt SJ. 2011 The early evolution of Archosauria: relationships and the origin of major clades. *Bull. Am. Mus. Nat. Hist.* **352**, 1–292. (doi:10.1206/352.1)
  52. Irmis RB, Parker WG, Nesbitt SJ, Liu J. 2007 Early ornithischian dinosaurs: the Triassic record. *Hist. Biol.* **19**, 3–22. (doi:10.1080/08912960600719988)
  53. Tykoski RS. 2005 *Anatomy, Ontogeny, and Phylogeny of Coelophysoid Theropods*, p. 553. PhD thesis, University of Texas, Austin, TX, USA.
  54. Sereno PC, Martínez RN, Alcober OA. 2012 Osteology of *Eoraptor lunensis* (Dinosauria, Sauropodomorpha). *J. Vert. Paleontol.* **32**(Suppl. 1), 83–179. (doi:10.1080/02724634.2013.820113)
  55. Dzik J. 2003 A beaked herbivorous archosaur with dinosaur affinities from the Early Late Triassic of Poland. *J. Vert. Paleontol.* **23**, 556–574. (doi:10.1671/A1097)
  56. Sereno PC. 2012 Taxonomy, morphology, masticatory function and phylogeny of heterodontosaurid dinosaurs. *Zookeys* **226**, 1–225. (doi:10.3897/zookeys.226.2840)
  57. Novas FE. 1994 New information on the systematics and postcranial skeleton of *Herrerasaurus ischigualastensis* (Theropoda: Herrerasauridae) from the Ischigualasto Formation (Upper Triassic) of Argentina. *J. Vert. Paleontol.* **13**, 400–423. (doi:10.1080/02724634.1994.10011523)
  58. Martínez RN, Alcober OA. 2009 A basal sauropodomorph (Dinosauria: Saurischia) from the Ischigualasto Formation (Triassic, Carnian) and the early evolution of Sauropodomorpha. *PLoS ONE* **4**, e4397. (doi:10.1371/journal.pone.0004397)
  59. Langer MC. 2003 The sacral and pelvic anatomy of the stem-sauropodomorph *Saturnalia tupiniquim* (Late Triassic, Brazil). *Paleobios* **23**, 1–40.
  60. Bittencourt JS, Kellner AWA. 2009 The anatomy and phylogenetic position of the Triassic dinosaur *Staurikosaurus pricei* Colbert, 1970. *Zootaxa* **2079**, 1–56.
  61. Langer MC, Ferigolo J. 2013 The Late Triassic dinosauriform *Sacisaurus agudoensis* (Caturrita Formation; Rio Grande do Sul, Brazil): anatomy and affinities. *Geol. Soc. London Spec. Publ.* **379**, 353–392. (doi:10.1144/SP379.16)
  62. Butler RJ. 2005 The 'fabrosaurid' ornithischian dinosaurs of the Upper Elliot Formation (Lower Jurassic) of South Africa and Lesotho. *Zool. J. Linn. Soc.* **145**, 175–218. (doi:10.1111/j.1096-3642.2005.00182.x)
  63. Butler RJ. 2010 The anatomy of the basal ornithischian dinosaur *Eocursor parvus* from the lower Elliot Formation (Late Triassic) of South Africa. *Zool. J. Linn. Soc.* **160**, 648–684. (doi:10.1111/j.1096-3642.2009.00631.x)
  64. Britt BB. 1991 Theropods of Dry Mesa Quarry (Morrison Formation, Late Jurassic), Colorado, with emphasis on the osteology of *Torvosaurus tanneri*. *Brigham Young Univ. Geol. Stud.* **37**, 1–72.
  65. Rauhut OWM. 2012 A reappraisal of a putative record of abelisauroid theropod dinosaur from the Middle Jurassic of England. *P. Geologist Assoc.* **123**, 779–786. (doi:10.1016/j.pgeola.2012.05.008)
  66. Madsen Jr JH, Welles SP. 2000 *Ceratosaurs* (Dinosauria, Theropoda): a revised osteology. *Utah Geol. Surv. Misc. Publ.* **2**, 1–80.
  67. Juárez Valieri RD, Fiorelli LE, Cruz LE. 2007 *Quilmesaurus curriei* Coria, 2001. Su validez taxonómica y relaciones filogenéticas. *Rev. Mus. Argent. Cienc. Nat. Bernardino Rivadavia* **9**, 59–66.
  68. Benson RBJ. 2010 A description of *Megalosaurus bucklandii* (Dinosauria: Theropoda) from the Bathonian of the United Kingdom and the relationships of Middle Jurassic theropods. *Zool. J. Linn. Soc.* **158**, 882–935. (doi:10.1111/j.1096-3642.2009.00569.x)



69. Goloboff P, Farris J, Nixon K. 2008 TNT, a free program for phylogenetic analysis. *Cladistics* **24**, 774–786. (doi:10.1111/j.1096-0031.2008.00217.x)
70. Rees PM, Ziegler AM, Valdes PJ. 2000 Jurassic phytogeography and climates: new data and model comparisons. In *Warm climates in earth history* (eds BT Huber, KG Macleod, SL Wing), pp. 297–318. Cambridge, UK: Cambridge University Press.
71. Brusatte SL, Benson RBJ, Currie PJ, Zhao X-J. 2010 The skull of *Monolophosaurus jiangi* (Dinosauria: Theropoda) and its implications for early theropod phylogeny and evolution. *Zool. J. Linn. Soc.* **158**, 573–607. (doi:10.1111/j.1096-3642.2009.00563.x)
72. Cúneo R, Ramezani J, Scasso R, Pol D, Escapa I, Zavattieri AM, Bowring SA. 2013 High-precision U–Pb geochronology and a new chronostratigraphy for the Canadon Asfalto Basin, Chubut, central Patagonia: implications for terrestrial faunal and floral evolution in Jurassic. *Gondwana Res.* **24**, 1267–1275. (doi:10.1016/j.gr.2013.01.010)
73. Hammer WR, Hickerson WJ. 1994 A crested theropod dinosaur from Antarctica. *Science* **264**, 828–830. (doi:10.1126/science.264.5160.828)
74. Sereno PC, Wilson JA, Larsson HCE, Dutheil DE, Sues H-D. 1994 Early Cretaceous dinosaurs from the Sahara. *Science* **266**, 451–476. (doi:10.1126/science.266.5183.267)
75. Ezcurra MD. 2012 *Sistemática, Biogeografía y Patrones Macroevolutivos de los dinosaurios terópodos del Triásico Tardío y Jurásico Temprano*, p. 512. Licenciatura thesis, Universidad de Buenos Aires, Buenos Aires, Argentina.
76. Luo Z, Wu X-C. 1994 The small tetrapods of the Lower Lufeng Formation, Yunnan, China. In *In the shadow of the dinosaurs* (eds NC Fraser, H-D Sues), pp. 251–270. Cambridge, UK: Cambridge University Press.
77. Nesbitt SJ, Smith ND, Irmis RB, Turner AH, Downs A, Norell MA. 2009 A complete skeleton of a Late Triassic saurischian and the early evolution of dinosaurs. *Science* **326**, 1530–1533. (doi:10.1126/science.1180350)
78. Ezcurra MD, Brusatte SL. 2011 Taxonomic and phylogenetic reassessment of the early neotheropod dinosaur *Camposaurus arizonensis* from the Late Triassic of North America. *Palaeontology* **54**, 763–772. (doi:10.1111/j.1475-4983.2011.01069.x)
79. Wilson JA, Sereno PC, Srivastava S, Bhatt DK, Khosla A, Sahni A. 2003 A new abelisaurid (Dinosauria, Theropoda) from the Lameta Formation (Cretaceous, Maastrichtian) of India. *Contr. Mus. Palaeont. Univ. Mich.* **31**, 1–42.
80. Rees PM, Noto CR, Parrish JM, Parrish JT. 2004 Late Jurassic climates, vegetation, and dinosaur distributions. *J. Geol.* **112**, 643–653. (doi:10.1086/424577)
81. Sellwood BW, Valdes PJ. 2008 Jurassic climates. *Proc. Geol. Assoc.* **119**, 5–17. (doi:10.1016/S0016-7878(59)80068-7)
82. Golonka J. 2007 Late Triassic and Early Jurassic palaeogeography of the world. *Palaeogeogr. Palaeoclimatol. Palaeoecol.* **244**, 297–307. (doi:10.1016/j.palaeo.2006.06.041)
83. Upchurch P, Hunn CA, Norman DB. 2002 An analysis of dinosaurian biogeography: evidence for the existence of vicariance and dispersal patterns caused by geological events. *Proc. R. Soc. Lond. B* **269**, 613–621. (doi:10.1098/rspb.2001.1921)
84. Zhu R, Yang Z, Wu H, Ma X, Huang B, Meng Z, Fang D. 1998 Paleomagnetic constraints on the tectonic history of the major blocks of China during the Phanerozoic. *Sci. China Ser. D* **41**, 1–19.
85. Ronquist F. 1997 Dispersal–vicariance analysis: a new approach to the quantification of historical biogeography. *Syst. Biol.* **46**, 195–203. (doi:10.1093/sysbio/46.1.195)
86. Yu Y, Harris AJ, He XJ. 2010 S-DIVA (statistical dispersal–vicariance analysis): a tool for inferring biogeographic histories. *Mol. Phylogenet. Evol.* **56**, 848–850. (doi:10.1016/j.ympev.2010.04.011)
87. Yu Y, Harris AJ, He XJ. 2014 RASP (Reconstruct Ancestral State in Phylogenies) 3.0. See <http://mnh.scu.edu.cn/soft/blog/RASP>.
88. Irmis R. 2004 First report of *Megapnosaurus* (Theropoda: Coelophysoidea) from China. *PaleoBios* **24**, 11–18.
89. Carrano MT, Sampson SD. 2004 A review of coelophysoids (Dinosauria: Theropoda) from the Early Jurassic of Europe, with comments on the late history of the Coelophysoidea. *N. Jb. Geol. Paläontol. Mh.* **9**, 537–558.
90. Montenat C, Monbaron M, Allain R, Aquesbi N, Dejax J, Hernandez J, Russell D, Taquet P. 2005 Stratigraphie et paléoenvironnement des dépôts volcano-détritiques à dinosauriens du Jurassique inférieur de Toundoute (Province de Ouarzazate, Haut-Atlas—Maroc). *Ecoloe Geol. Helv.* **98**, 261–270. (doi:10.1007/s00015-005-1161-x)





**Cite this article:** Langer MC, Rincón AD, Ramezani J, Solórzano A, Rauhut OWM. 2014 Addendum to 'New dinosaur (Theropoda, *stem*-Averostra) from the earliest Jurassic of the La Quinta formation, Venezuelan Andes'. *R. Soc. open sci.* **1**: 140527.  
<http://dx.doi.org/10.1098/rsos.140527>

Received: 16 December 2014  
Accepted: 16 December 2014  
Published: 24 December 2014

**Author for correspondence:**  
Max C. Langer  
e-mail: [mclanger@ffclrp.usp.br](mailto:mclanger@ffclrp.usp.br)

# Addendum to 'New dinosaur (Theropoda, *stem*-Averostra) from the earliest Jurassic of the La Quinta formation, Venezuelan Andes'

Max C. Langer<sup>1</sup>, Ascanio D. Rincón<sup>2</sup>,  
Jahandar Ramezani<sup>3</sup>, Andrés Solórzano<sup>2</sup>  
and Oliver W. M. Rauhut<sup>4</sup>

<sup>1</sup>Laboratório de Paleontologia de Ribeirão Preto, FFCLRP, Universidade de São Paulo, Avenida Bandeirantes 3900, 14040-901 Ribeirão Preto-SP, Brazil

<sup>2</sup>Laboratorio de Paleontología, Centro de Ecología, Instituto Venezolano de Investigaciones Científicas (IVIC), Carretera Panamericana Km 11, 1020-A Caracas, Venezuela

<sup>3</sup>Department of Earth, Atmospheric and Planetary Sciences, Massachusetts Institute of Technology, 77 Massachusetts Avenue, Cambridge, MA, USA

<sup>4</sup>SNSB, Bayerische Staatssammlung für Paläontologie und Geologie and Department of Earth and Environmental Sciences, Ludwig-Maximilians-University, Richard-Wagner-Strasse 10, Munich, Germany

This addendum is to ensure that the ICZN (International Code of Zoological Nomenclature) criteria for the availability of new names are satisfied. This addendum, being a 'corrigendum' in the sense of the Glossary of the Code, should be consulted alongside the original publication [1] as only both together fulfil the ICZN criteria. The date of publication of the nomenclatural acts is the date that this addendum has been published.

The holotype of *Tachiraptor admirabilis* is IVIC-P-2867 and is housed at Colección Paleontológica del Centro de Ecología, Instituto Venezolano de Investigaciones Científicas, Caracas, Venezuela. The full name and location of the repository is listed in the electronic supplementary material of the original article, but should have been included in the main article text.

The published work and the nomenclatural acts it contains (new genus and species names) have also been registered in Zoobank under the following LSIDs (Life Science Identifiers):

Original Publication: 8951A1E3-E9EB-4DB9-808D-2DB424686941  
This addendum: F8786B0B-FDCB-4A7C-AD5B-EAAD65E818F0

Genus: C9F4BDB3-D0C8-4F37-A485-820BC0BABDEE  
Species: 65710920-94AF-4778-8412-434868D5F214

This information was not included in the original paper.

## Reference

1. Langer MC, Rincón AD, Ramezani J, Solórzano A, Rauhut OWM. 2014 New dinosaur (Theropoda, *stem-Averostra*) from the earliest Jurassic of the La Quinta formation, Venezuelan Andes. *R. Soc. open sci.* **1**, 140184. (Published 8 October 2014). (doi:10.1098/rsos.140184)